



# DELTA CONVEYANCE **DESIGN & CONSTRUCTION** AUTHORITY

---

ENGINEERING A RELIABLE WATER SUPPLY FOR CALIFORNIA

# DELTA CONVEYANCE DESIGN & CONSTRUCTION AUTHORITY (DCA)

The DCA is a joint powers authority created by 16 California public water agencies to assist with the design and construction of a modernized Delta Conveyance Project (DCP). The DCA is currently focused on the design and engineering needed to support permitting. As a public agency, the DCA is subject to the Brown Act and the Public Records Act.

## DCA Member Agencies

Metropolitan Water District of Southern California  
Kern County Water Agency  
Santa Clara Valley Water District

### Class 2

Alameda County Flood Control Zone 7 Water District  
Alameda County Water District

### Class 3 and 7

Santa Clarita Valley Water Agency  
Dudley Ridge Water District

### Class 8

Antelope Valley-East Kern Water Agency  
Coachella Valley Water District  
Crestline-Lake Arrowhead Water Agency  
Mojave Water Agency

San Gabriel Valley Municipal Water District  
San Bernardino Valley Municipal Water District  
Desert Water Agency  
San Geronio Pass Water Agency  
Palmdale Water District



Publication Date: Fall 2024



# UNDERSTANDING DCA'S WORK

The California Department of Water Resources (DWR) develops and plans the Delta Conveyance Project. Under the direct supervision of DWR, the DCA conducts concept engineering and design work to support the environmental review process in accurately assessing impacts and identifying effective mitigation measures. By leaving fewer unknowns to future design, the DCA's work allows better-informed concepts in the final environmental documents. Work conducted by the DCA includes, but is not limited to:

- Field investigations of soil and other conditions
- Development of layout for project and alternatives
- Studies on transportation modes and routes, including how to minimize construction effects on those who live and work in the region
- Support of air quality analysis to identify how to reduce carbon emissions throughout construction
- Evaluations of equipment and materials to reduce noise and other community impacts
- Tactics to reduce construction time
- Program controls to support the management of risks, procurement, costs, schedule, and document control



- Information provided through a variety of channels including social media, public presentations, and conferences
- Community engagement that provides clear, concise, accessible and timely information to the public; facilitates public participation in the planning process; and improves mutual understanding and transparency to encourage dialogue and facilitate constructive public input



## DCA TEAM

Our team includes regionally-based, internationally acclaimed engineers, field technicians, administrative professionals, and outreach specialists with a broad range of credentials and experience in high-impact infrastructure projects.



### **Graham Bradner / Executive Director**

Graham has over 25 years of experience in the evaluation, design, and construction of large-scale water supply infrastructure in Northern California. He is a Professional Geologist in the State of California, as well as a Certified Engineering Geologist, Certified Hydrogeologist, and Project Management Professional. Before being appointed Executive Director, Graham was the DCA engineering lead for forebay and levee features, siting studies, and program-wide evaluations.

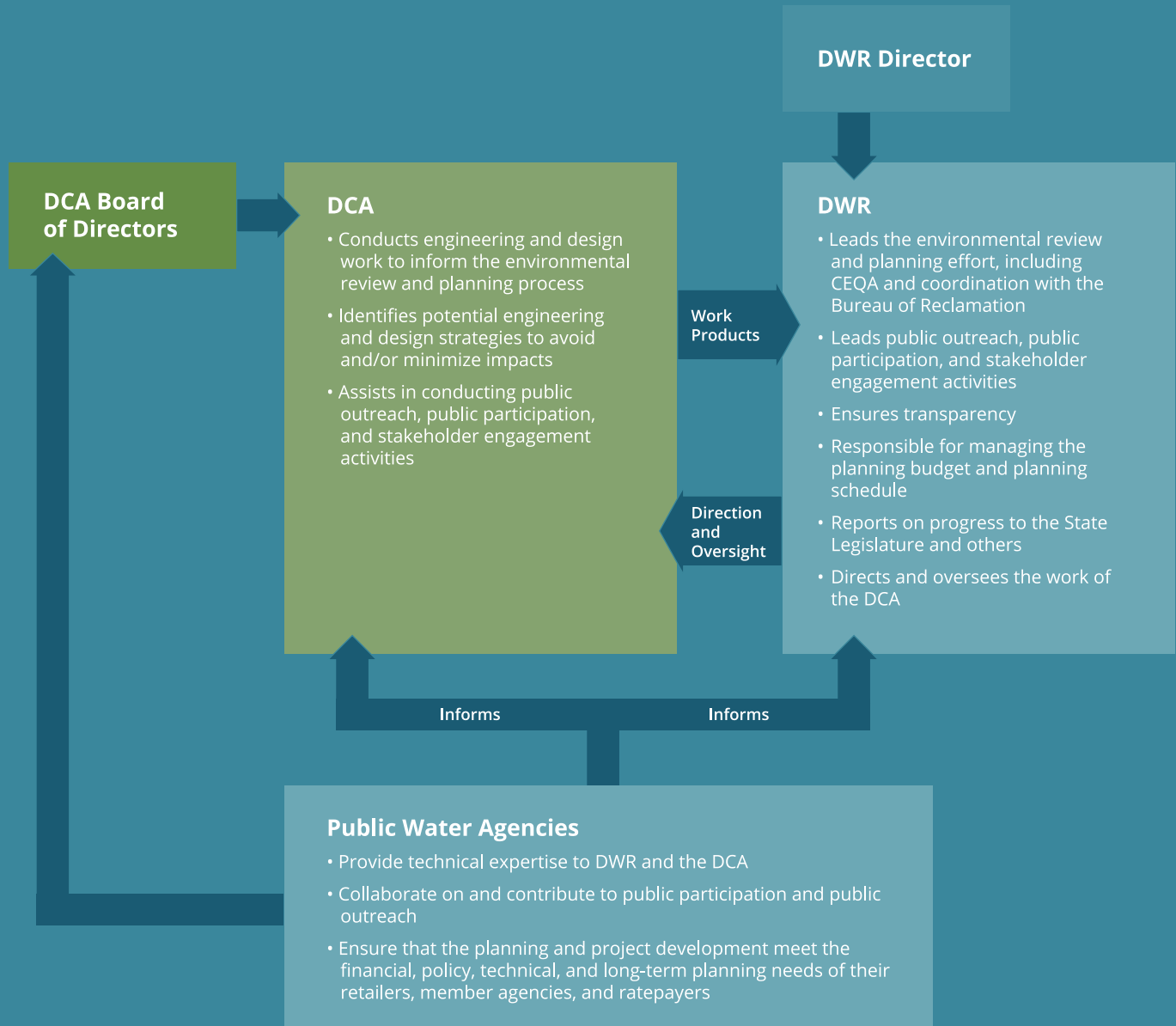


### **LEARN MORE**

*Scan to learn more about the DCA Team and Board of Directors*  
[www.dcdca.org/about-us](http://www.dcdca.org/about-us)

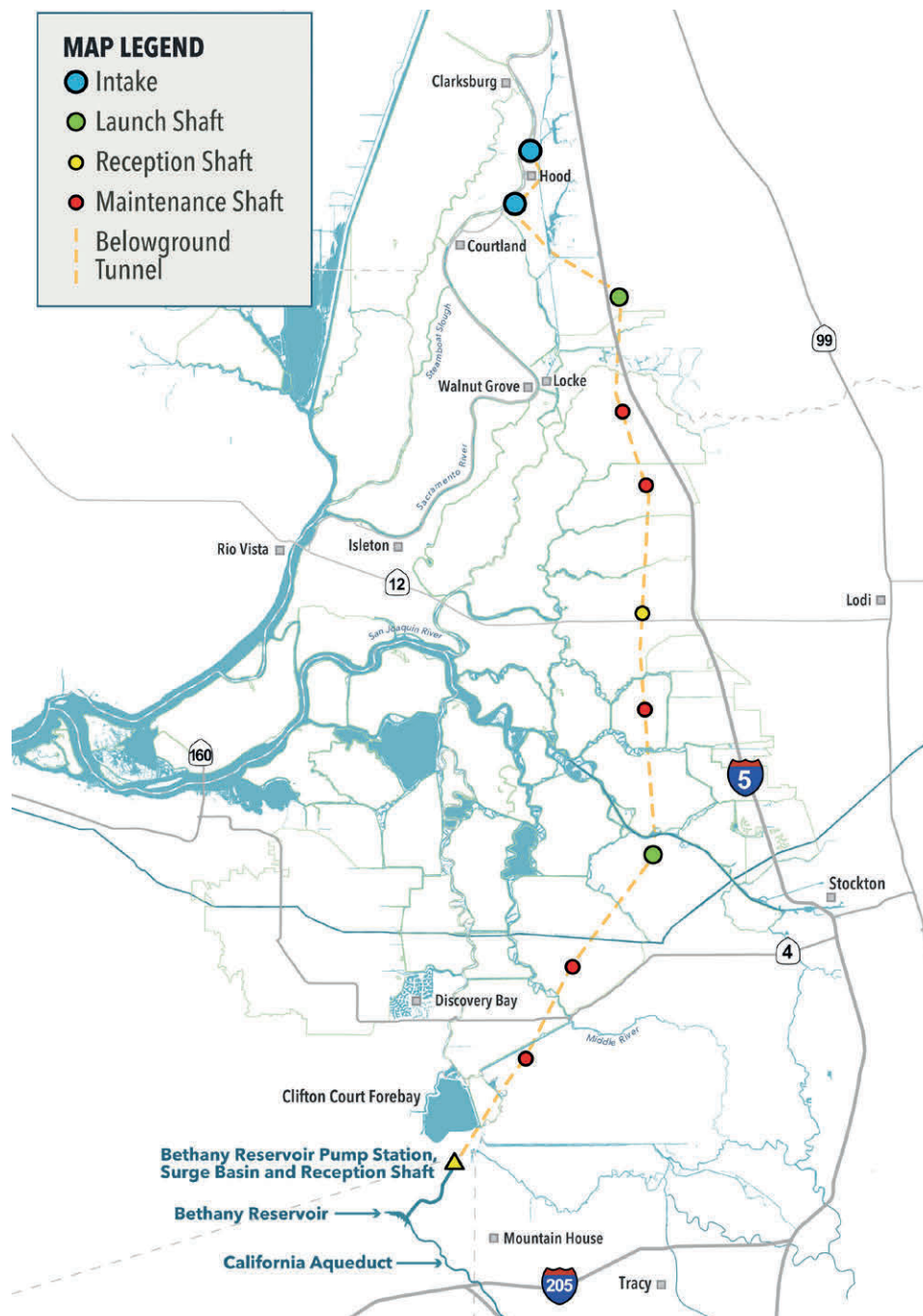
# DWR/DCA TEAM ORGANIZATION

## Roles & Responsibilities for Delta Conveyance



# DELTA CONVEYANCE PROJECT

The Delta Conveyance Project is a modernization of the State Water Project that will include two new intakes on the Sacramento River and an approximately 45-mile main underground tunnel with a pumping plant that connects to the Bethany Reservoir on the California Aqueduct.





# WHAT IS DELTA CONVEYANCE AND WHY IS IT IMPORTANT?

Delta conveyance refers to State Water Project (SWP) infrastructure in the vast network of waterways comprising the Sacramento-San Joaquin Delta (Delta) that collects and moves fresh, clean, and affordable water to homes, farms, and businesses throughout major regions of the state from the Bay Area to Southern California.

The Delta is at the center of California's vital water distribution system. Two-thirds of California's water originates in the Sierra Nevada Mountains as snowpack and eventually flows through the Delta. The State Water Project collects and delivers water from the Delta to more than 27 million Californians and 750,000 acres of farmland, consistent with water rights and applicable water quality requirements. The infrastructure that enables conveyance for California's primary water supply is critical to the health of local communities and the success of our state's economy.

## Why is the Delta Conveyance Project needed?

Because the SWP relies on the Delta's natural channels to convey water, it is vulnerable to earthquakes and sea level rise. Upgrading SWP infrastructure protects against these threats and secures the longevity of the SWP and the



future reliability of SWP water supplies. DWR's fundamental purpose in pursuing the project is to develop new diversion and conveyance facilities in the Delta to restore and protect the reliability of SWP water deliveries consistent with the State's Water Resilience Portfolio in a cost-effective manner. The Delta Conveyance Project has been developed to address sea level rise and climate change, minimize water supply disruption due to seismic risk, protect SWP water supply reliability, and provide operational flexibility to improve aquatic conditions in the Delta.



## MORE INFO

Scan the code to learn  
more about the project  
[www.dcdca.org/overview](http://www.dcdca.org/overview)





## STAY INFORMED

---

The Department of Water Resources (DWR) and the Delta Conveyance Design and Construction Authority (DCA) work together to ensure that communities across California stay informed and engaged with the Delta Conveyance Project. Through social media updates, community events, and informational materials, we're committed to making project information readily available and accessible to everyone.

On the DCA website, you'll find a variety of resources, including videos and documents in multiple languages, including Spanish and

Chinese. We've also ensured print and digital materials are accessible at Delta-area libraries for those who prefer hard copies or have limited internet access. Additionally, we're bringing information directly to communities with pop-up events and project tours.

Our goal is to provide clear, timely information so that everyone has the chance to stay informed about this important project.

**DCA staff are available to meet with community groups upon request. Contact [info@dcdca.org](mailto:info@dcdca.org).**

*It is important to note that participation in engineering briefings does not indicate support for any delta conveyance project.*



### STAY INFORMED

Sign-up for project news and updates  
[bit.ly/DCAUpdates](https://bit.ly/DCAUpdates)







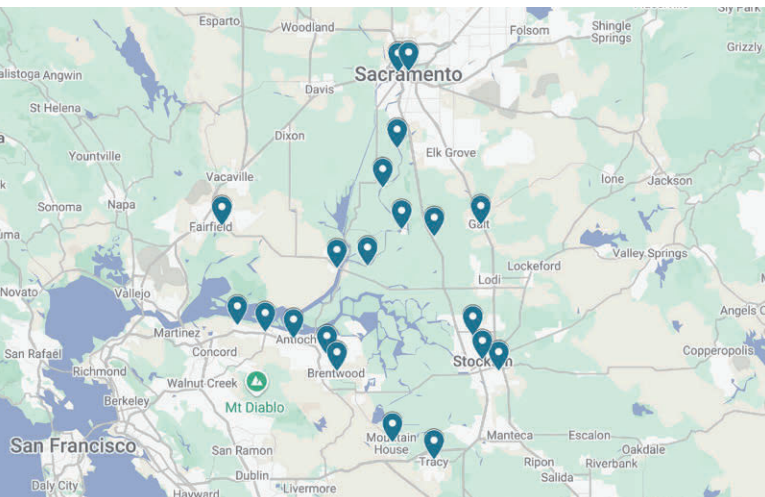
## EDUCATIONAL VIDEOS

DCA has developed a series of educational videos of the Delta Conveyance Project's various aspects and features. Visit the DCA website and YouTube channel to get information about the placement and approximate sizes of the components of the Delta Conveyance Project.



### SEE THE VIDEOS

Scan the code to visit DCA's YouTube channel and view our "A Closer Look" video series.  
[bit.ly/DCACloserLook](https://bit.ly/DCACloserLook)



## DCA INFORMATION MATERIALS AVAILABLE AT LOCAL LIBRARIES

Delta area public libraries are a valuable resource for the Delta community at large. Understanding the limits of broadband and computer access in the region, DCA and DWR have provided area libraries with informational resources in print and on flash drives. Librarians have been briefed on these resources and materials and can help visitors access information related to the project.



### MORE INFO

Scan the code to see a list of participating libraries.  
[bit.ly/DeltaAreaLibraries](https://bit.ly/DeltaAreaLibraries)

# LINKS AND RESOURCES

## From DCA ([dcdca.org](https://dcdca.org))

### A Closer Look Videos

<https://tinyurl.com/ACloserLookVideos>

### A Closer Look Fact Sheets

<https://www.dcdca.org/info-center/document-library/>

### Stakeholder Engagement Committee (SEC) Meeting Videos

<https://tinyurl.com/DCASECMeetings>

*NOTE: Information presented may be refined as meetings progress due to refinements made to conceptual plans based on stakeholder feedback, design changes intended to reduce anticipated effects, in light of new information, etc.*

## From Department of Water Resources

### General Information page

<https://water.ca.gov/deltaconveyance>

### Sign-up for updates

<https://tinyurl.com/DWRUpdates>

### “Deep Dive” Videos

Videos on a variety of topics ranging from the State Water Project to Soil Investigations

<https://tinyurl.com/DWRdeepdive>

### Public Information Materials Toolkit

<https://tinyurl.com/DCPInfoToolkit>

### Quick Questions Videos

<https://tinyurl.com/DCPQuickQuestions>

### Questions and Additional Information

[deltaconveyance@water.ca.gov](mailto:deltaconveyance@water.ca.gov) | 1-866-924-9955

## FOR QUESTIONS AND ADDITIONAL INFORMATION:

Contact Us: 888-853-8486 | [info@dcdca.org](mailto:info@dcdca.org)



980 9th Street, Suite 2400  
Sacramento, CA 95814

888-853-8486  
[info@dcdca.org](mailto:info@dcdca.org)

For TTY users, use the  
California Relay Service  
by dialing 711 or:

English: TTY (800) 735-2929  
Spanish: TTY (800) 855-3000  
Voice: (800) 735-2922



-  [facebook.com/deltaconveyance](https://facebook.com/deltaconveyance)
-  [instagram.com/delta.conveyance.authority](https://instagram.com/delta.conveyance.authority)
-  [x.com/dcdcainfo](https://x.com/dcdcainfo)
-  [youtube.com/@dcdcainfo](https://youtube.com/@dcdcainfo)

[WWW.DCDCA.ORG](https://www.dcdca.org)

---