



CALIFORNIA
WATERFIX
RELIABLE. CLEAN. WATER.

A large, high-quality photograph of a water splash, centered on the page. The splash is captured in mid-air, with multiple droplets and a crown-like shape at the top, set against a dark blue background. The entire image is overlaid with a semi-transparent blue filter.

DCA BOARD MEETING EXECUTIVE DIRECTOR REPORT

May 17, 2018



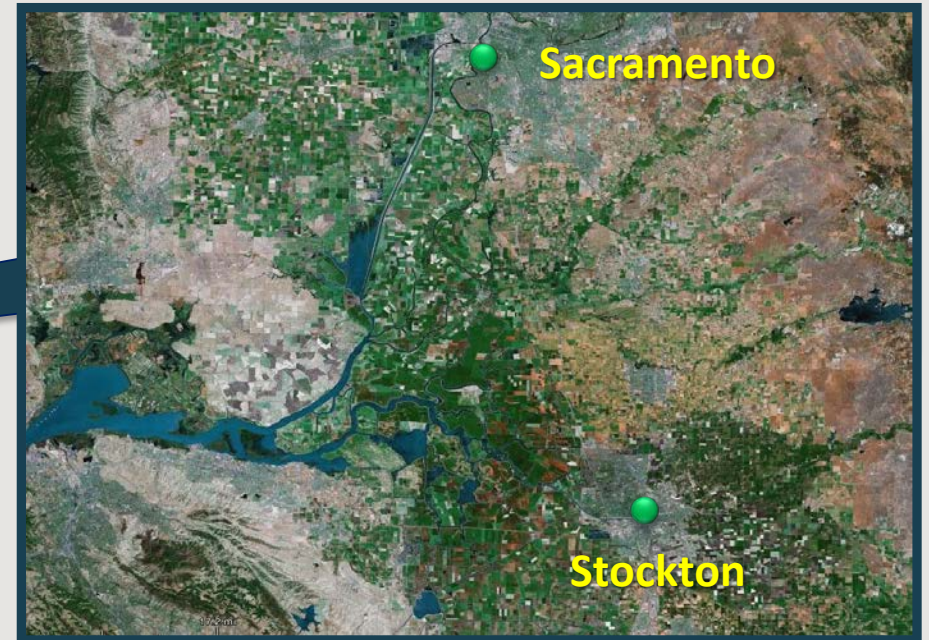
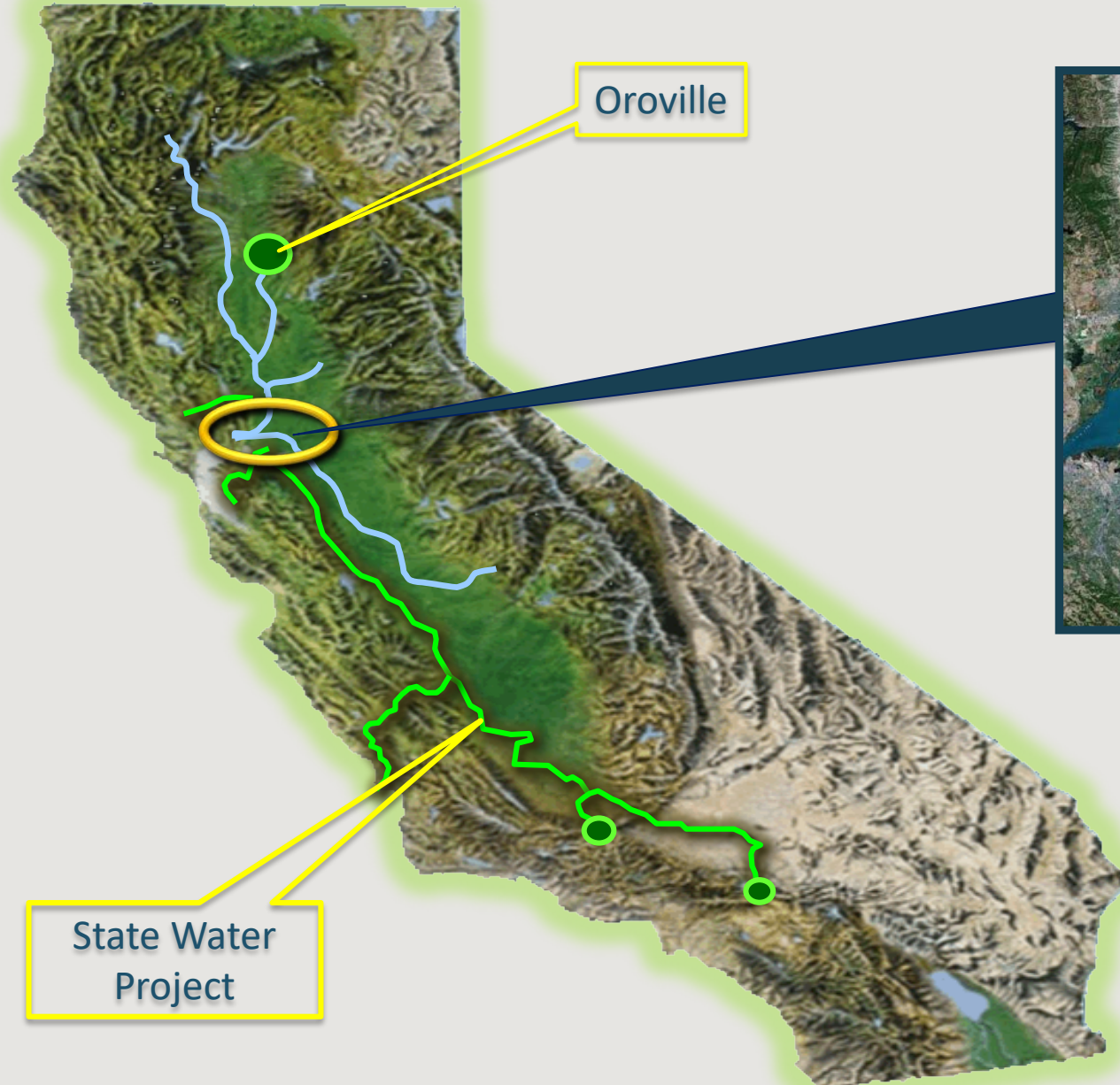
OVERVIEW

- Program Overview
- Formation of the DCA
- Initial work activities
- Next steps





WATERFIX LOCATION



DELTA





CALIFORNIA WATERFIX - CAPITAL BUDGET

WATER FACILITY	2017 BUDGET
PROGRAM MANAGMENT¹	\$375,000,000
ENGINEERING MANAGEMENT²	\$1,635,000,000
ENVIRONMENTAL PERMITTING, MITIGATION PLANNING AND ENGINEERING	\$88,000,000
CONSTRUCTION	\$10,380,000,000
Intakes Construction	\$1,183,000,000
Forebays Construction	\$823,000,000
Utilities, Power and Roads Construction	\$406,000,000
Tunnel Construction	\$6,611,000,000
Tunnel Pad and Shaft Construction	\$841,000,000
Communications and Controls Construction	\$27,000,000
Pump Plants Construction	\$488,000,000
CONTINGENCY (36 PERCENT)	\$3,692,000,000
LAND ACQUISITION (INCLUDES 20% CONTINGENCY)	\$160,000,000
SUB-TOTAL WATER FACILITY	\$16,330,000,000
MITIGATION IMPLEMENTATION AND MONITORING (INCLUDES 35%CONTINGENCY)³	\$401,000,000
TOTAL CAPITAL BUDGET⁴	\$16,731,000,000

1 Includes program management cost through construction

2 Includes Engineering Design and Construction Management costs through construction

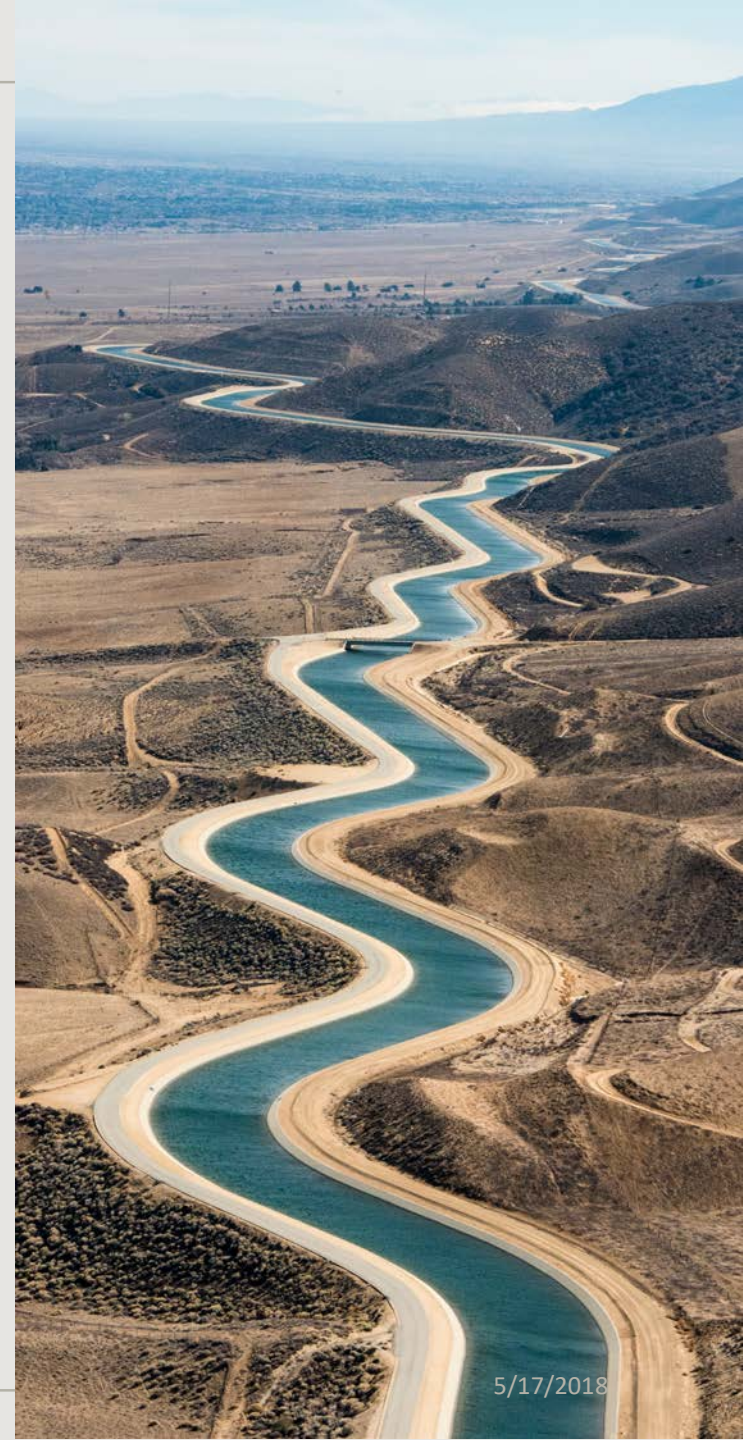
3 Does not include Operation and Maintenance costs when project is fully operational

4 Reflects 2014 Program budget of \$15,310,000 escalated to 2017 dollars



DCA BACKGROUND

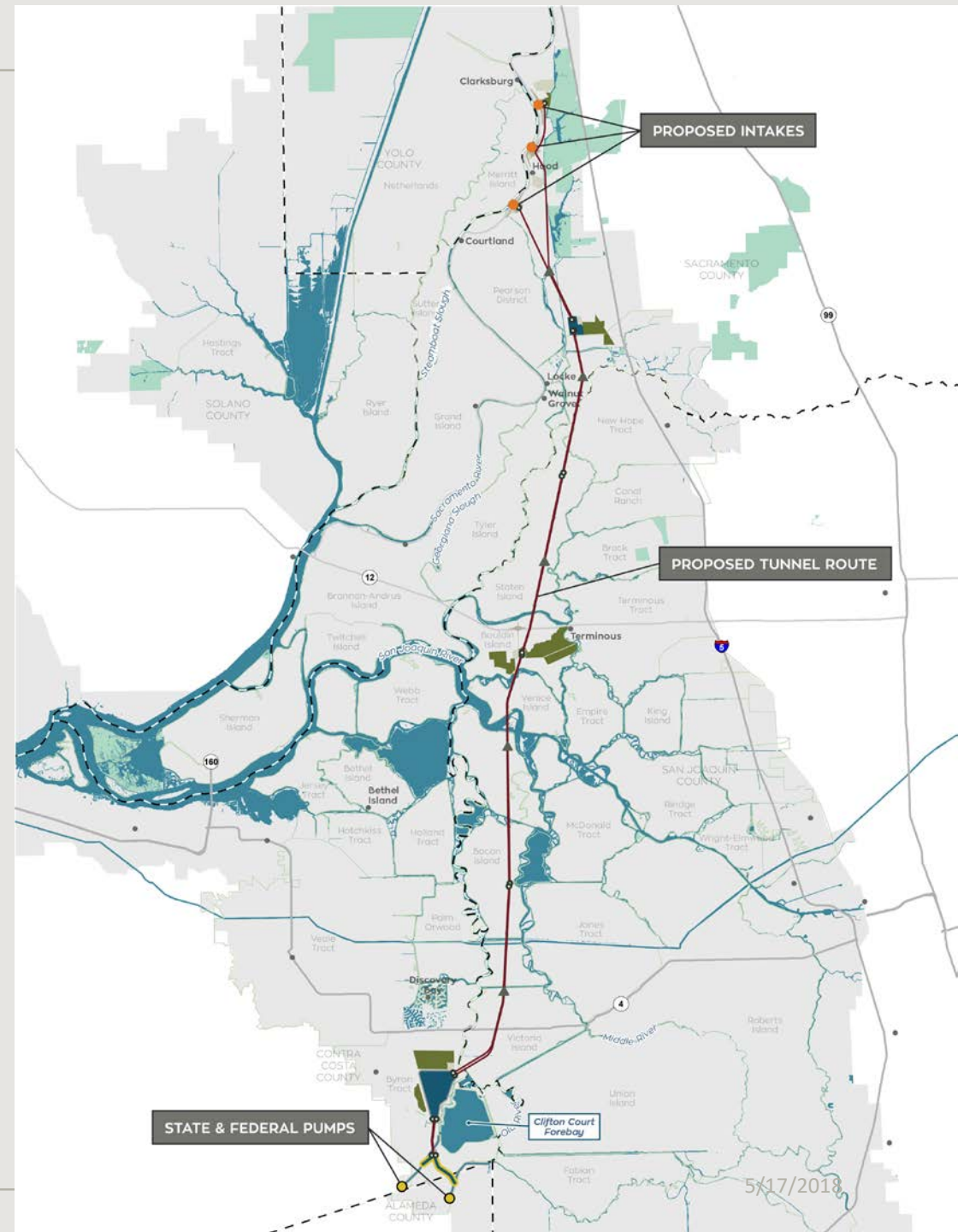
- Need for a long-range plan to implement an infrastructure program of this scope has been apparent for a long time
- Planning exercise completed in 2011 outlined roles, decision processes and reporting
- Design and Construction Enterprise (DCE), established in 2014, has been providing management to date
- DCE tasks to be transitioned to the new Delta Conveyance Design and Construction Authority (DCA)
- DWR's Delta Conveyance Office (DCO) will provide oversight





DCA KEY CONCEPTS

- Dedicated special purpose enterprise organization – sunsets at project completion
- A new way for DWR and the PWAs to work together, successfully using respective expertise
- Provides for timely, efficient, cost effective decision-making process
- Accountable, financially transparent
- Responsible risk management
- Single point of accountability
- Best in class staffing
- DWR oversight of budget, schedule and quality



ENTITY RELATIONSHIPS

Provide Oversight of DCA



Delta
Conveyance Office
(DCO)

JEPA Agreement



Delta Conveyance Design
and Construction Joint
Powers Authority
(DCA)

Design and Construct WaterFix

Provide Financing for WaterFix



Finance Joint Powers
Authority



INITIAL ACTIVITIES: ESTABLISH DCA START-UP TEAM

- Key team positions
 - Interim Executive Director: Jill Duerig
 - Interim General Counsel: Stefanie Morris
 - Program Manager
 - Chief Engineer
 - Finance
 - Human Resources
 - Office space acquisition
 - Outreach
 - Contracts
 - Project Controls
 - Information Technology
 - Environmental
 - Transition Coordination



OBJECTIVES FOR DCA START-UP TEAM

The DCA start-up team will:

- Mobilize the resources necessary to appropriately staff the organization
- Establish financial systems
- Acquire office and meeting spaces
- Undertake mission critical activities
 - Continue key WaterFix work activities
 - Initiate new, time sensitive work



WATERFIX WORK TRANSITIONING TO DCA

Program Management

- Budget and Schedule Management
- RFQ Issuance and Award
- Existing Contract Management
- Bouldin Island Early Work Activities
- Power Procurement
- Real Property Investigations

Permit Management, 20+ permits, including :

- Section 404
- Section 10
- Section 14, 33, USC 408
- Section 9
- Section 1602
- Section 401
- Section 402



```

graph TD
    BD[BOARD OF DIRECTORS] --> ED[EXECUTIVE DIRECTOR]
    ED -.- PAG[PROGRAM ADVISORY GROUP]
    ED --> FA[FINANCE & ACCOUNTING]
    ED --> CO[COMMUNICATIONS & OUTREACH]
    ED --> IA[INTERNAL AUDIT]
    ED --> PM[PROGRAM MANAGER]
    ED --> LC[LEGAL COUNSEL]
    ED --> RM[RISK MANAGEMENT]
    ED --> SM[SAFETY MANAGEMENT]
    PM --> SA[STAFFING & ADMIN]
    PM --> EP[ENVIRONMENT & PLANNING]
    PM --> QA[QA / QC]
    PM --> CE[CHIEF ENGINEER]
    PM --> PCC[PROGRAM CONTROLS & CONTRACTING]
    PM --> ITS[INFORMATION TECHNOLOGY & SYSTEMS]
    PM --> RPS[REAL PROPERTY SERVICES]
    SA --> ST[STAFFING]
    ST --> OM[OFFICE MANAGEMENT]
    EP --> EP1[ENVIRONMENTAL PERMITS]
    EP1 --> CM[CONVEYANCE MITIGATION]
    QA --> ST1[STANDARDS]
    ST1 --> PM1[PERFORMANCE MANAGEMENT]
    CE --> EDM[ENGINEERING DESIGN MANAGER]
    EDM --> TSS[TUNNELS & SHAFTS]
    EDM --> UPR[UTILITIES, POWER & ROADS]
    EDM --> PP[PUMPING PLANT]
    EDM --> INT[INTAKES]
    EDM --> FB[FOREBAYS]
    EDM --> CNS[COMMUNICATIONS, NETWORK & SCADA]
    EDM --> GE[GEOTECH]
    EDM --> COM[COMMISSIONING]
    PCC --> PC[PROGRAM CONTROLS]
    PC --> C[CONTRACTING]
    ITS --> CA[CENTRALIZED ADMINISTRATION]
    CA --> GT[GENERAL TECHNOLOGY]
    RPS --> ROW[ROW, SURVEY & MAPPING]
    ROW --> AA[APPRAISAL & ACQUISITIONS]
  
```

The organizational chart is structured as follows:

- BOARD OF DIRECTORS** (Dark Green Box)
 - EXECUTIVE DIRECTOR** (Dark Blue Box)
 - PROGRAM ADVISORY GROUP** (Dark Blue Box, connected via dashed line)
 - FINANCE & ACCOUNTING** (Dark Blue Box)
 - COMMUNICATIONS & OUTREACH** (Dark Blue Box)
 - INTERNAL AUDIT** (Dark Blue Box)
 - PROGRAM MANAGER** (Dark Blue Box)
 - STAFFING & ADMIN** (Medium Blue Box)
 - STAFFING** (Light Blue Box)
 - OFFICE MANAGEMENT** (Light Blue Box)
 - ENVIRONMENT & PLANNING** (Medium Blue Box)
 - ENVIRONMENTAL PERMITS** (Light Blue Box)
 - CONVEYANCE MITIGATION** (Light Blue Box)
 - QA / QC** (Medium Blue Box)
 - STANDARDS** (Light Blue Box)
 - PERFORMANCE MANAGEMENT** (Light Blue Box)
 - CHIEF ENGINEER** (Medium Blue Box)
 - ENGINEERING DESIGN MANAGER** (Brown Box)
 - TUNNELS & SHAFTS** (Grey Box)
 - UTILITIES, POWER & ROADS** (Grey Box)
 - PUMPING PLANT** (Grey Box)
 - INTAKES** (Grey Box)
 - FOREBAYS** (Grey Box)
 - COMMUNICATIONS, NETWORK & SCADA** (Grey Box)
 - GEOTECH** (Grey Box)
 - COMMISSIONING** (Grey Box)
 - PROGRAM CONTROLS & CONTRACTING** (Medium Blue Box)
 - PROGRAM CONTROLS** (Light Blue Box)
 - CONTRACTING** (Light Blue Box)
 - INFORMATION TECHNOLOGY & SYSTEMS** (Medium Blue Box)
 - CENTRALIZED ADMINISTRATION** (Light Blue Box)
 - GENERAL TECHNOLOGY** (Light Blue Box)
 - REAL PROPERTY SERVICES** (Medium Blue Box)
 - ROW, SURVEY & MAPPING** (Light Blue Box)
 - APPRAISAL & ACQUISITIONS** (Light Blue Box)
 - LEGAL COUNSEL** (Dark Blue Box)
 - RISK MANAGEMENT** (Dark Blue Box)
 - SAFETY MANAGEMENT** (Dark Blue Box)





STAFFING THE DCA

GOAL: BEST IN CLASS EXPERTISE

- Single-purpose organization based in Sacramento area
- Single point of accountability
- Melded team with world-class expertise and methods
- All key staff to be co-located
- Staffing will come from DWR, Public Water Agencies, and consultants
- Organization sunsets at completion of project commissioning





INITIAL ACTIVITIES: DCA'S FIRST THREE MONTHS

- Continue WaterFix permitting efforts
- Secure office space
- Establish financial systems
- Secure initial long-term staff from PWAs through Inter-Agency Agreements
- Review existing responses to RFQs (ED, Engineering Design Mgr, Property Acquisition, Survey/Mapping/ROW/Title and Geotech)
- Select and make recommendations to board, as appropriate
- Award initial consulting agreements



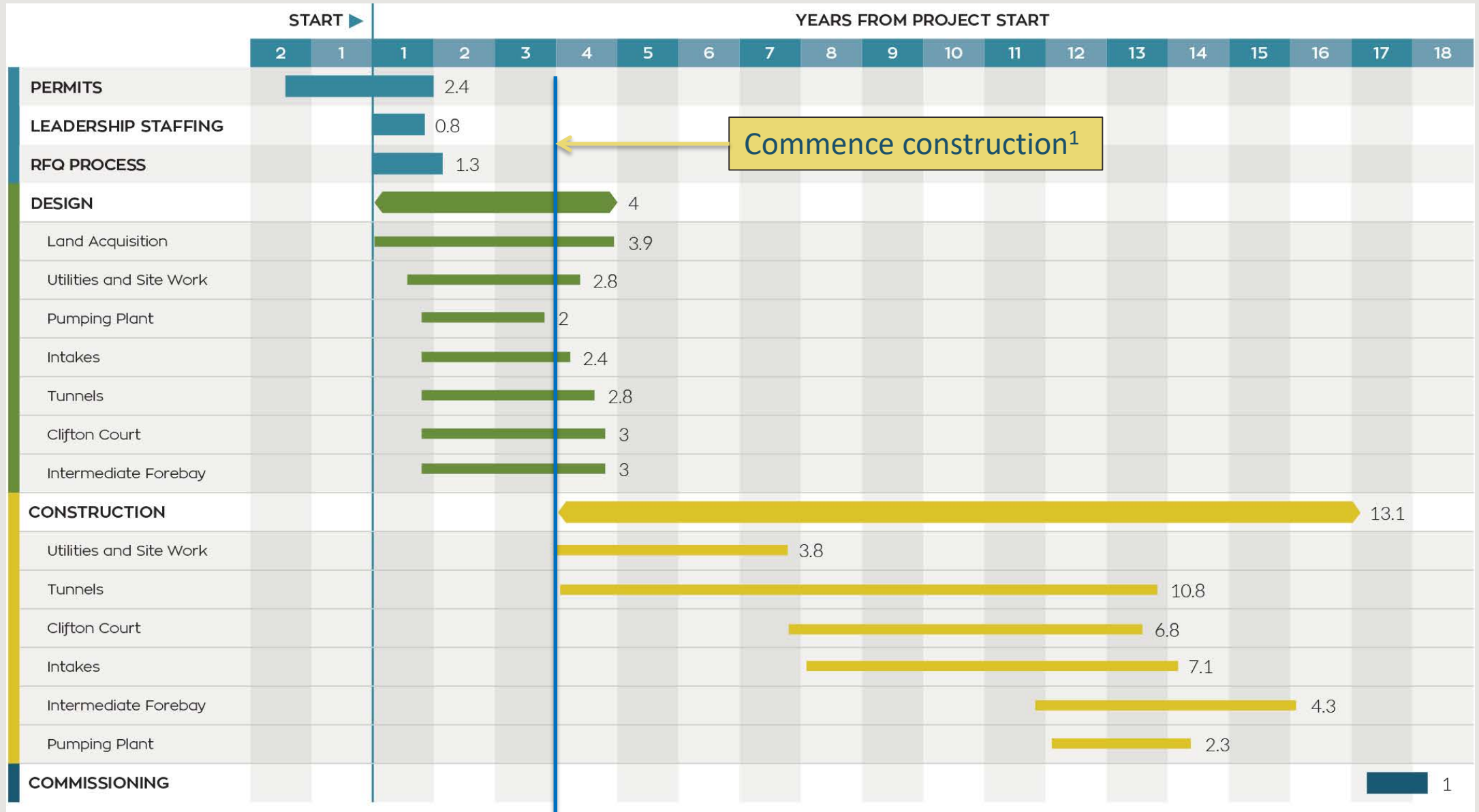
INITIAL ACTIVITIES

DCA'S FIRST SIX MONTHS

- Establish fully-functioning DCA office
- Develop overall Program Management Plan
 - Annual budgets, work plans, and schedules
- Establish overall program controls management system
- Establish standard administrative procedures and workflows
- Develop Program Communication Plan
- Develop risk assessment, mitigation and management plan



WATERFIX PROGRAM SCHEDULE



*Dates are subject to change.



QUESTIONS?



CALIFORNIA
WATERFIX
RELIABLE. CLEAN. WATER.
