



# DCA

DELTA CONVEYANCE DESIGN  
& CONSTRUCTION AUTHORITY



## Stakeholder Engagement Committee April 22, 2020

**Disclaimer:** These maps are for Stakeholder Engagement Committee **discussion purposes only**. They do not represent a decision by the DCA or DWR. Final decisions about the project will be made by DWR and will **NOT** be made until the concluding stages of the CEQA process.

# Meeting Overview

**3:** Minutes Review

**4a:** SEC Questions or Comments on March 11th Presentation

**4b:** DCA Response to key SEC Siting Comments from March 11<sup>th</sup> Meeting

**4c:** Southern Complex Facilities

**4d:** SEC Comments on Agendized Items


**4e:** Discussion on DCA Board Presentation by SEC Representative

**4f:** Public Comment on Agendized Items



**Disclaimer:** These maps are for Stakeholder Engagement Committee **discussion purposes only**. They do not represent a decision by the DCA or DWR. Final decisions about the project will be made by DWR and will **NOT** be made until the concluding stages of the CEQA process.





## Item 3: Minutes Review

Disclaimer: These maps are for Stakeholder Engagement Committee discussion purposes only. They do not represent a decision by the DCA or DWR. Final decisions about the project will be made by DWR and will NOT be made until the concluding stages of the CEQA process.

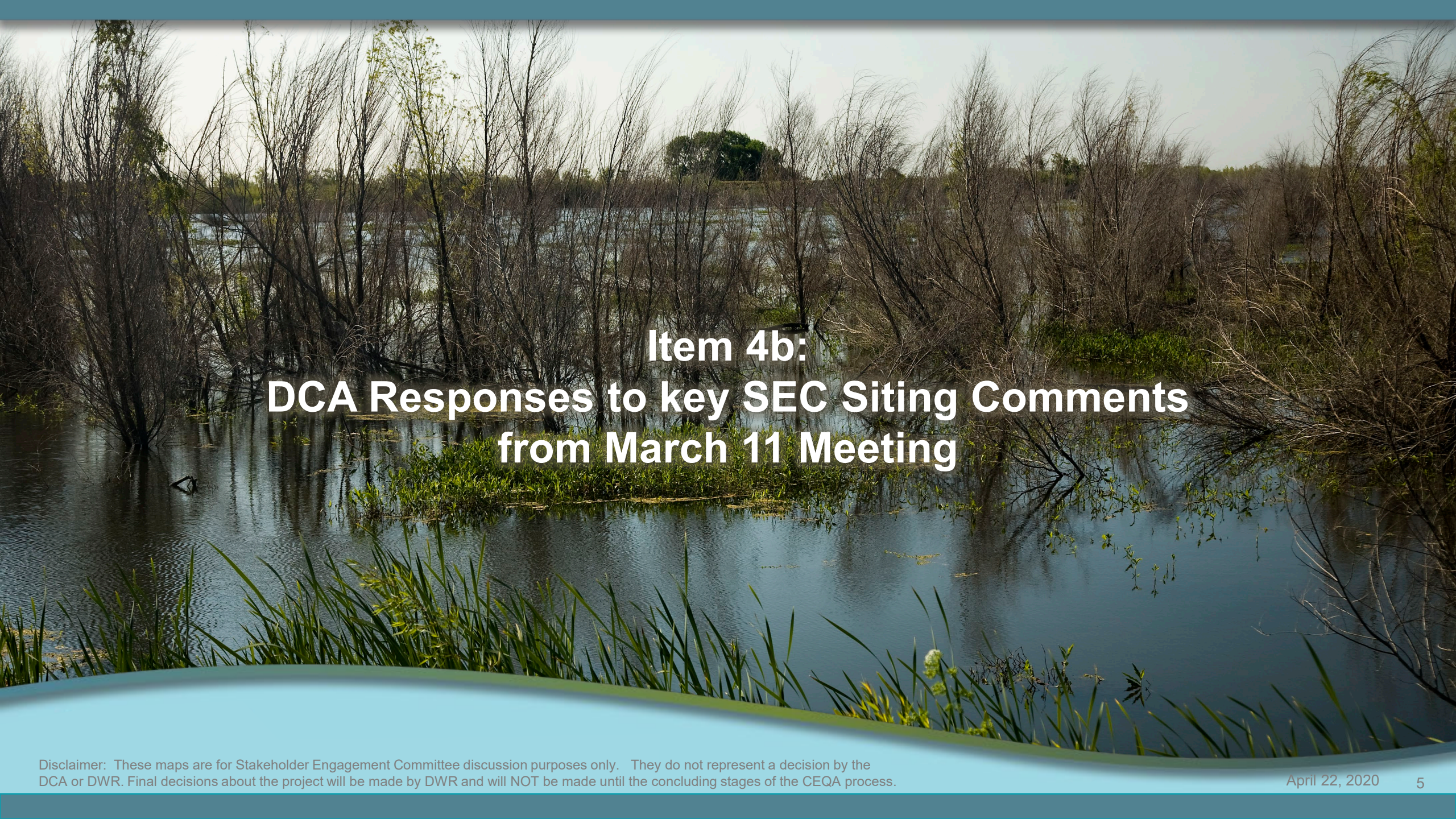




## Item 4a: SEC Questions and Comments on March 11th Presentation

Disclaimer: These maps are for Stakeholder Engagement Committee discussion purposes only. They do not represent a decision by the DCA or DWR. Final decisions about the project will be made by DWR and will NOT be made until the concluding stages of the CEQA process.





## **Item 4b: DCA Responses to key SEC Siting Comments from March 11 Meeting**



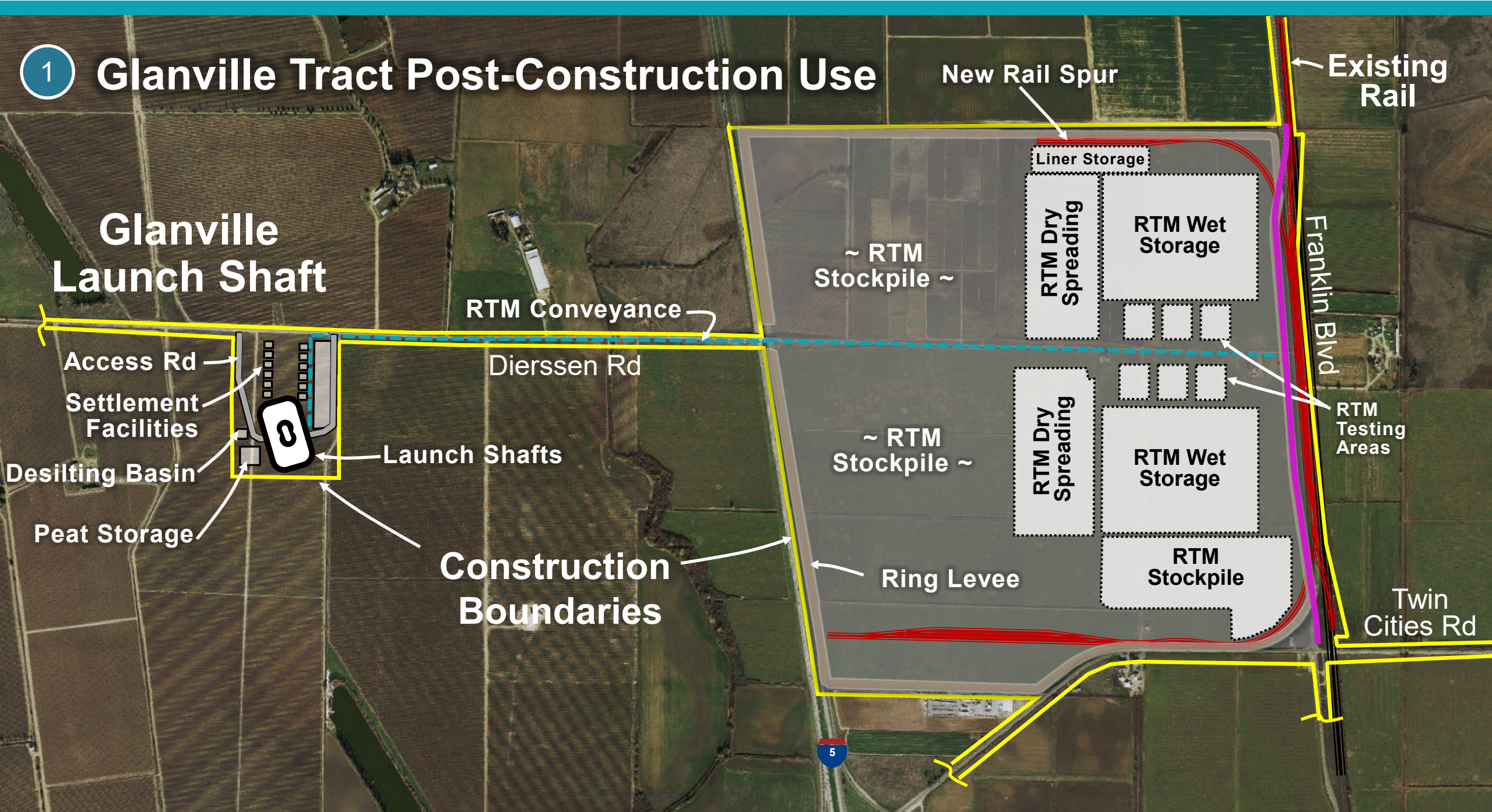
# Key SEC Siting Comments from March 11th Meeting

---

- 1 **Glanville Tract Construction Site**
- 2 **Truck Routes to Intakes - Stone Lakes Refuge Considerations**
- 3 **Bouldin Island Barge Landing Site – Recreational Boating Considerations**
- 4 **Barge Traffic – Bridge Considerations**
- 5 **Staten Island Maintenance Shaft – Sandhill Crane Habitat Considerations**
- 6 **Proximity of Sites to Recreational Facilities**

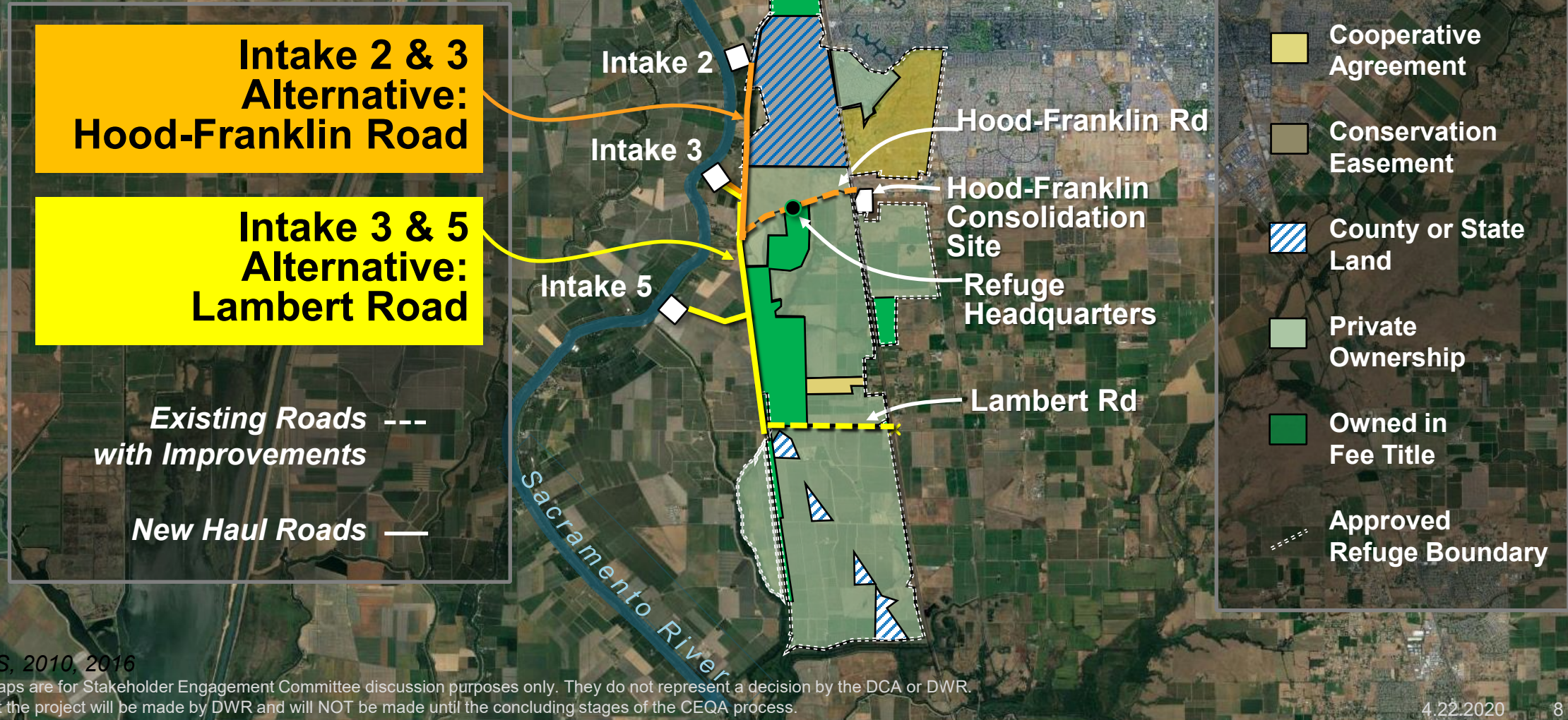


# 1 Glanville Tract Post-Construction Use





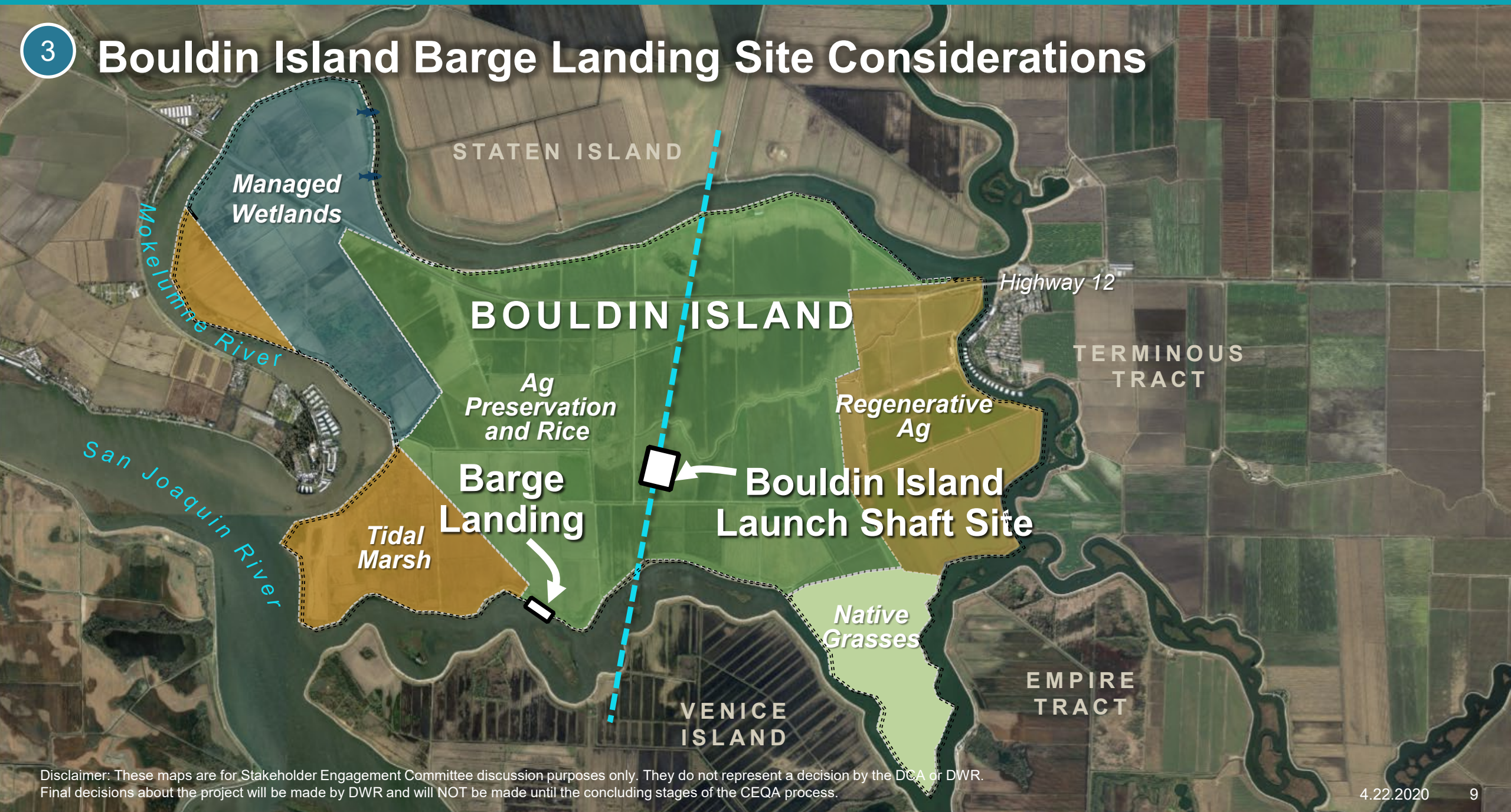
## 2 Intakes Traffic Routes – Stone Lakes Refuge Considerations





3

## Bouldin Island Barge Landing Site Considerations

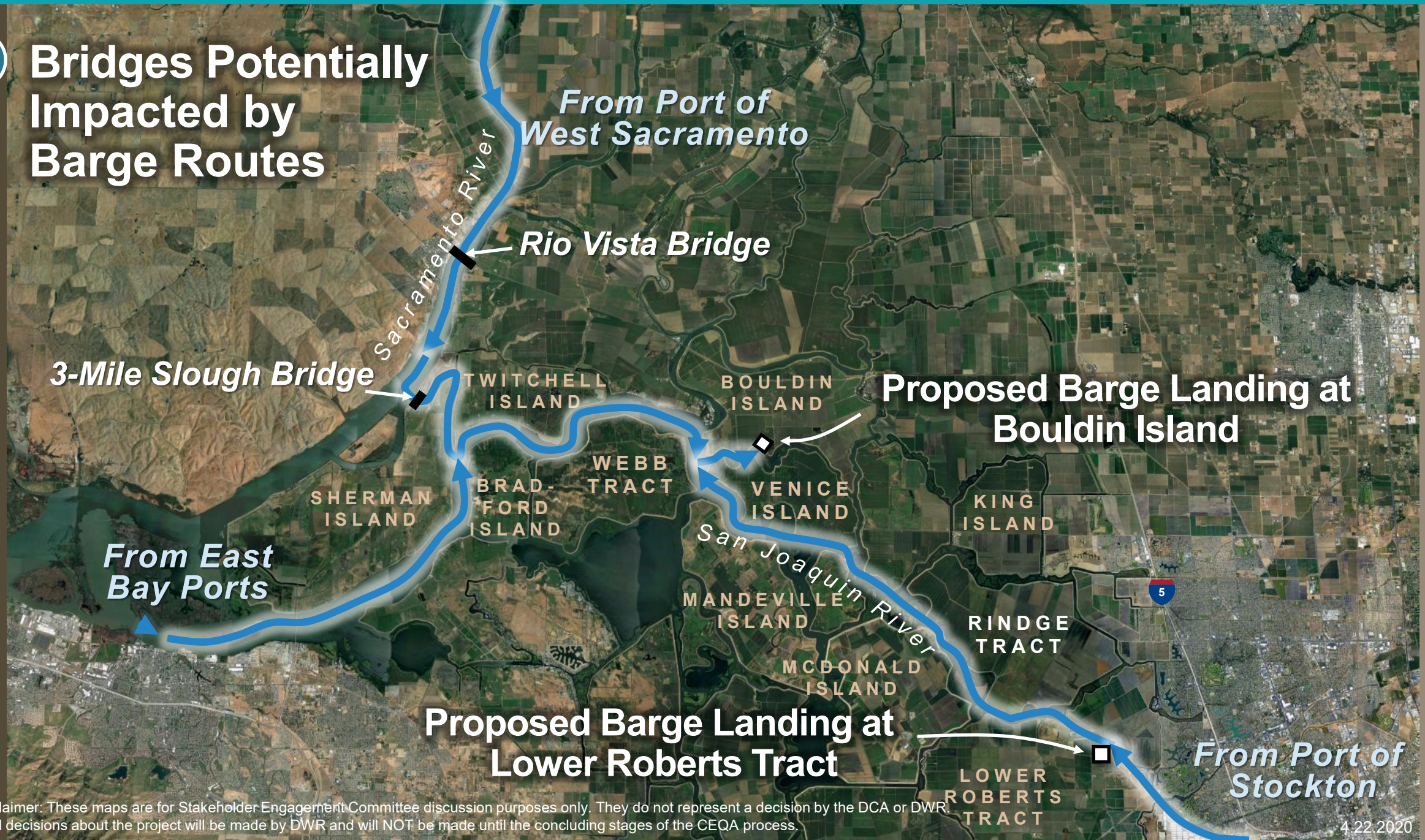


Disclaimer: These maps are for Stakeholder Engagement Committee discussion purposes only. They do not represent a decision by the DCA or DWR. Final decisions about the project will be made by DWR and will NOT be made until the concluding stages of the CEQA process.



4

## Bridges Potentially Impacted by Barge Routes



Disclaimer: These maps are for Stakeholder Engagement Committee discussion purposes only. They do not represent a decision by the DCA or DWR. Final decisions about the project will be made by DWR and will NOT be made until the concluding stages of the CEQA process.

4.22.2020

10



5 Staten Island Shaft  
– Habitat  
Considerations

New Alignment

Former Alignment

West Walnut Grove Road



NEW HOPE  
TRACT

STATEN  
ISLAND

CANAL RANCH  
TRACT

Relocated Staten  
Island Maintenance  
Shaft

Staten Island Road

TYLER  
ISLAND

Former Shaft  
Location

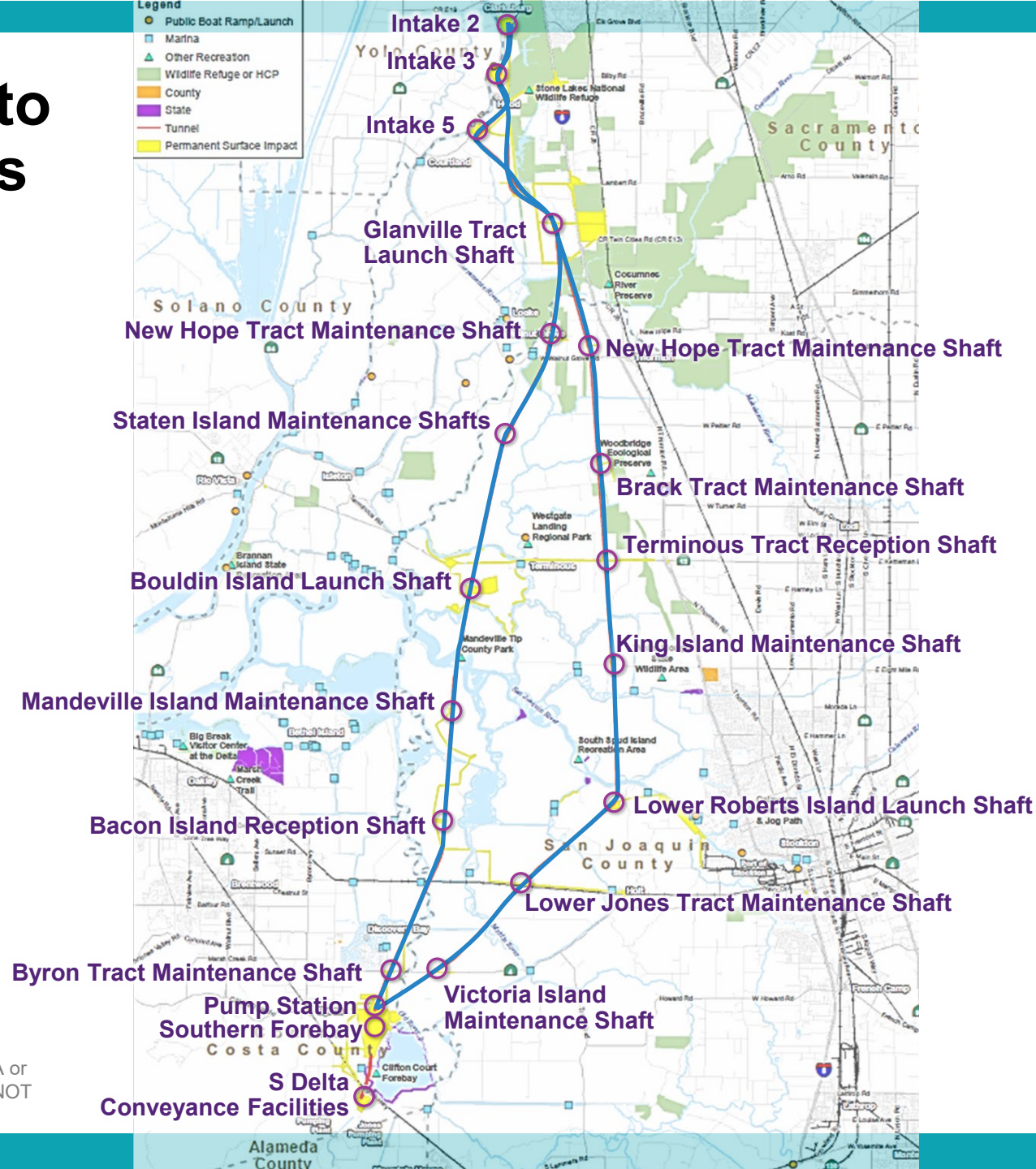
BRACK TRACT

BRACK TRACT

Disclaimer: These maps are for Stakeholder Engagement Committee discussion purposes only. They do not represent a decision by the DCA or DWR. Final decisions about the project will be made by DWR and will NOT be made until the concluding stages of the CEQA process.



## 6 Proximity of Sites to Recreational Facilities



Disclaimer: These maps are for Stakeholder Engagement Committee discussion purposes only. They do not represent a decision by the DCA or DWR. Final decisions about the project will be made by DWR and will NOT be made until the concluding stages of the CEQA process.



A photograph of a wetland area. In the foreground, there are green reeds and grasses. The middle ground shows a body of water with several bare, thin trees standing in it. In the background, there is a line of trees and a small hill. The sky is overcast.

## Item 4c: Southern Complex Facilities



# South Delta Facilities Schematic

## Tunnel and Pump Station Capacity

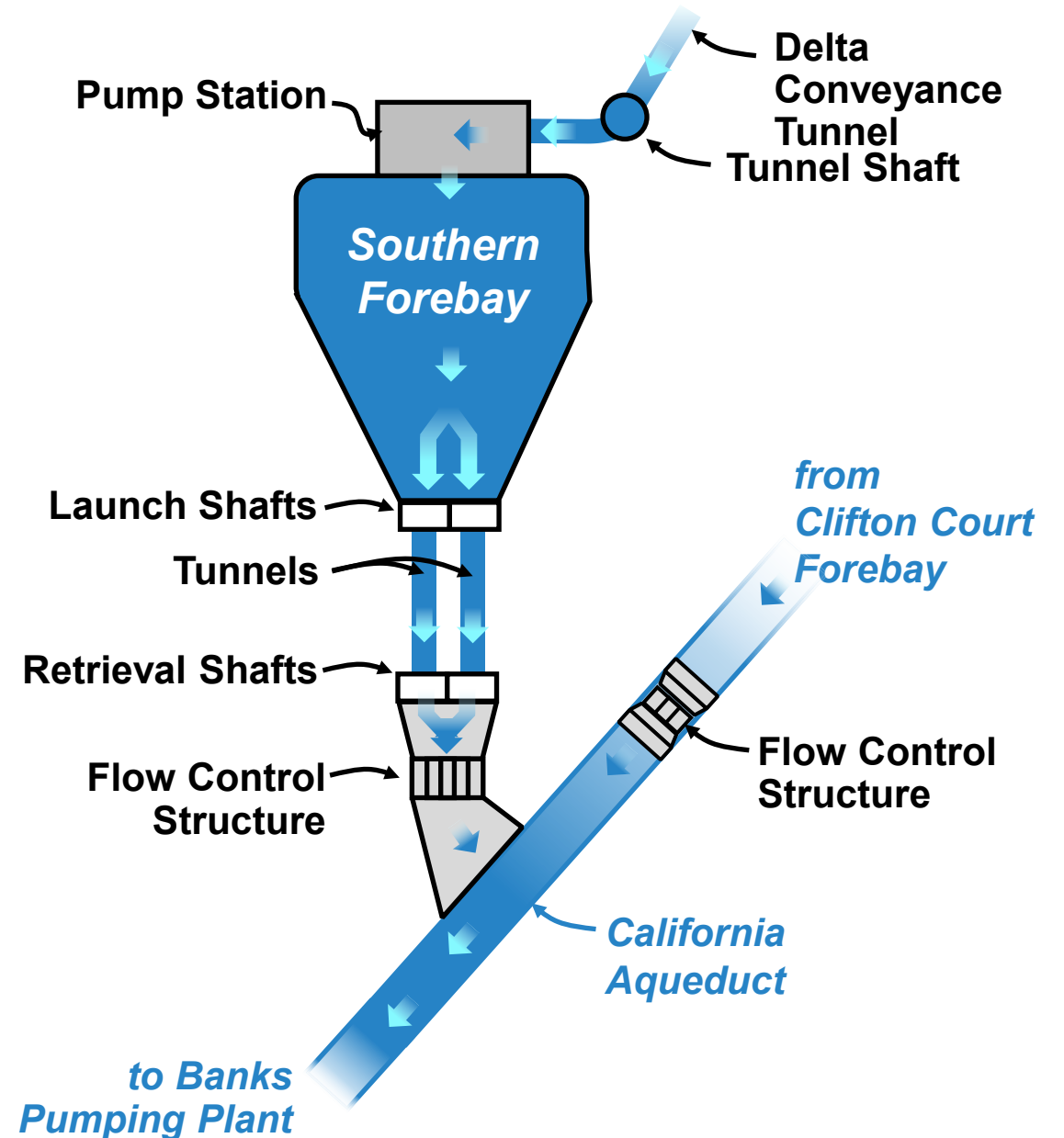
- 36 ft diameter
- 6,000 cfs

## Southern Forebay Sizing Criteria

- Store 9,000 cfs capacity for 12 Hours  
(Note: 9,000 cfs = normal Banks Pumping Capacity)
- 9,000 Acre-Feet Operating Volume
- 750 Acre Water Surface Area

## South Delta Conveyance Facilities

- Two, 40-ft diameter tunnels
- Deliver 10,670 cfs to Banks  
(Note: Max capacity of Banks Pump Station)



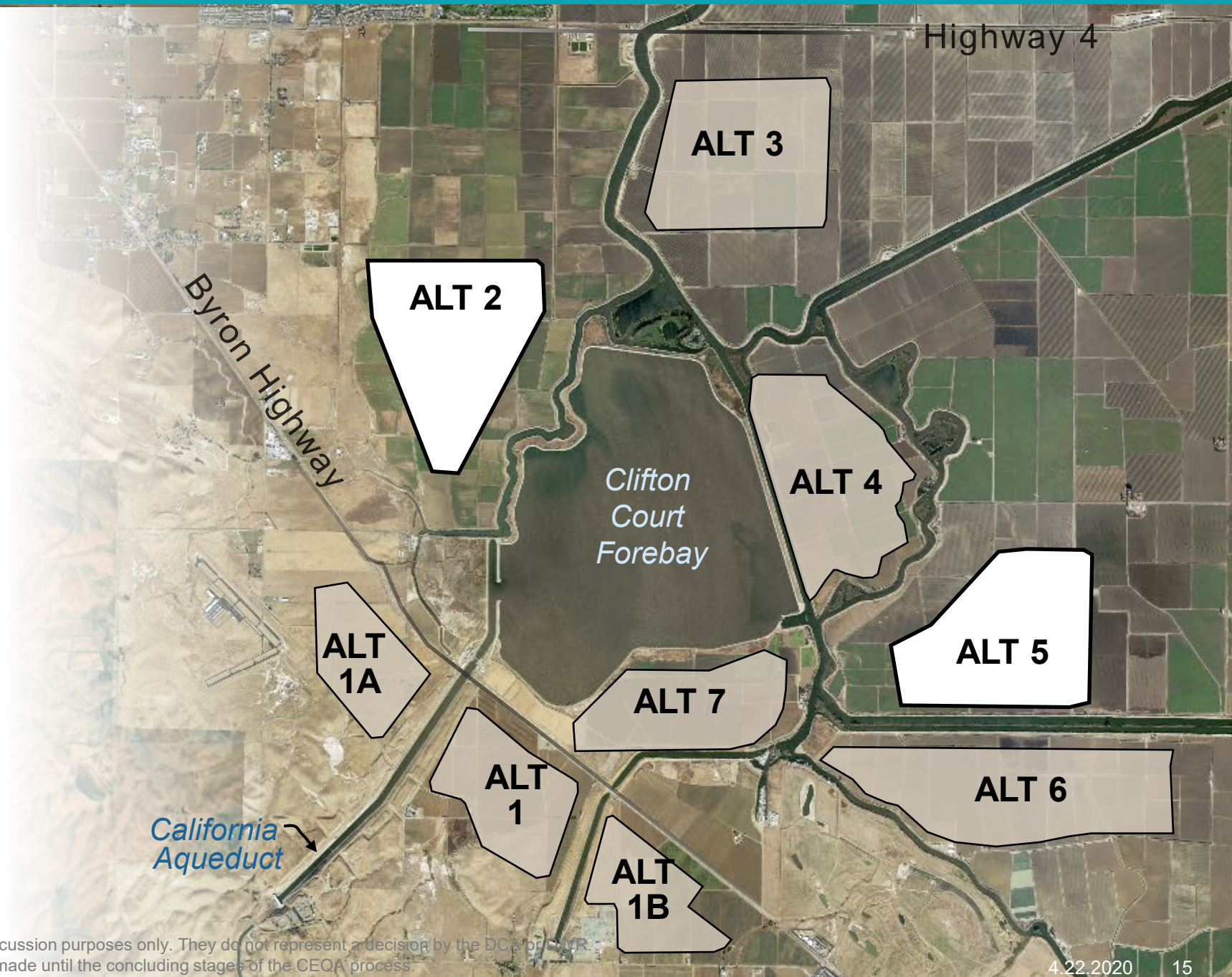


# Southern Forebay Siting Alternatives

## 7 Sites Identified

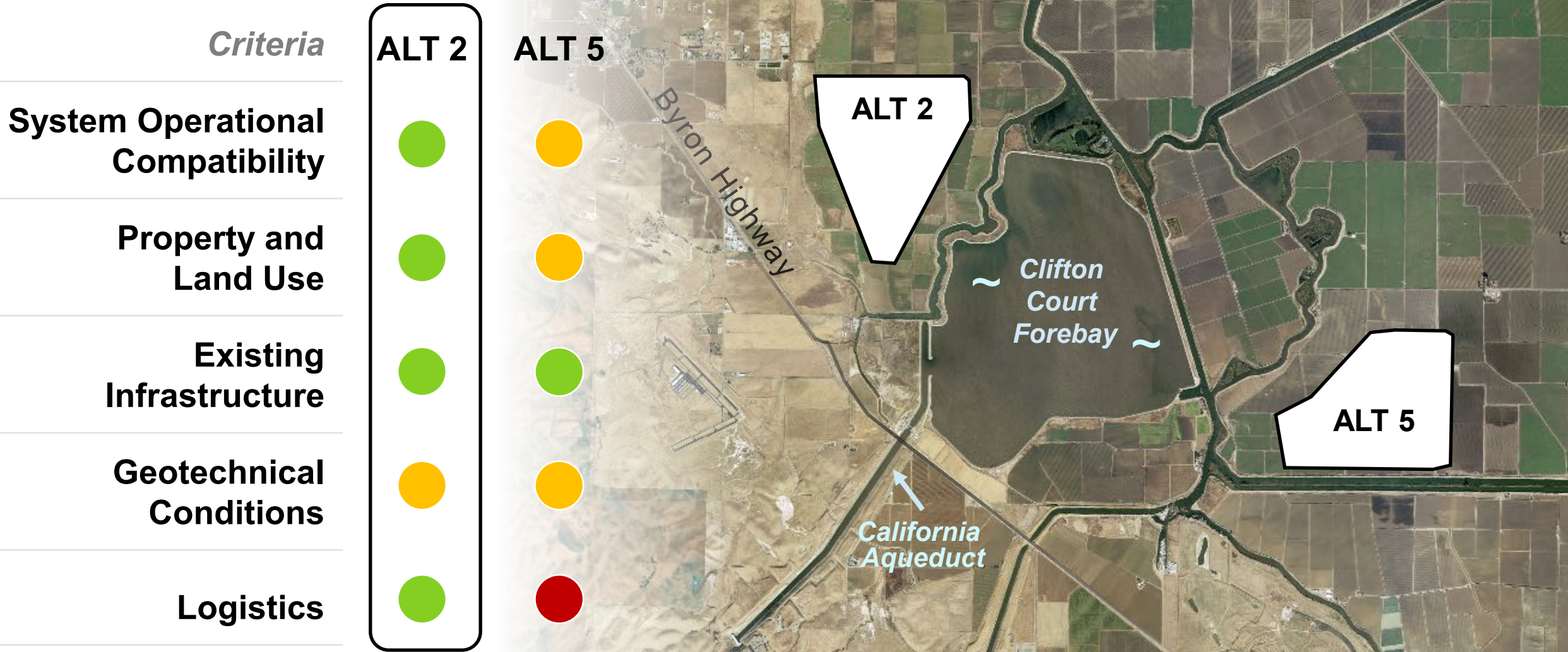
### Sites 1, 3, 4, 6 & 7 Eliminated:

- Too Small
- Environmental Site Effects
- Poor Access





# Siting Criteria for Final Analysis





# South Delta Facilities

South Delta  
Pumping Plant

New Rail

Southern  
Forebay

Road Improvements

South Delta Flow  
Control Facilities

A

B

C

Southern  
Forebay

Clifton Court  
Forebay

Construction  
Boundary

Final Project  
Boundary

A + B

C

● Construction Area:  
1950 acres

● Final Project Area:  
1275 acres

● Construction Area:  
180 acres

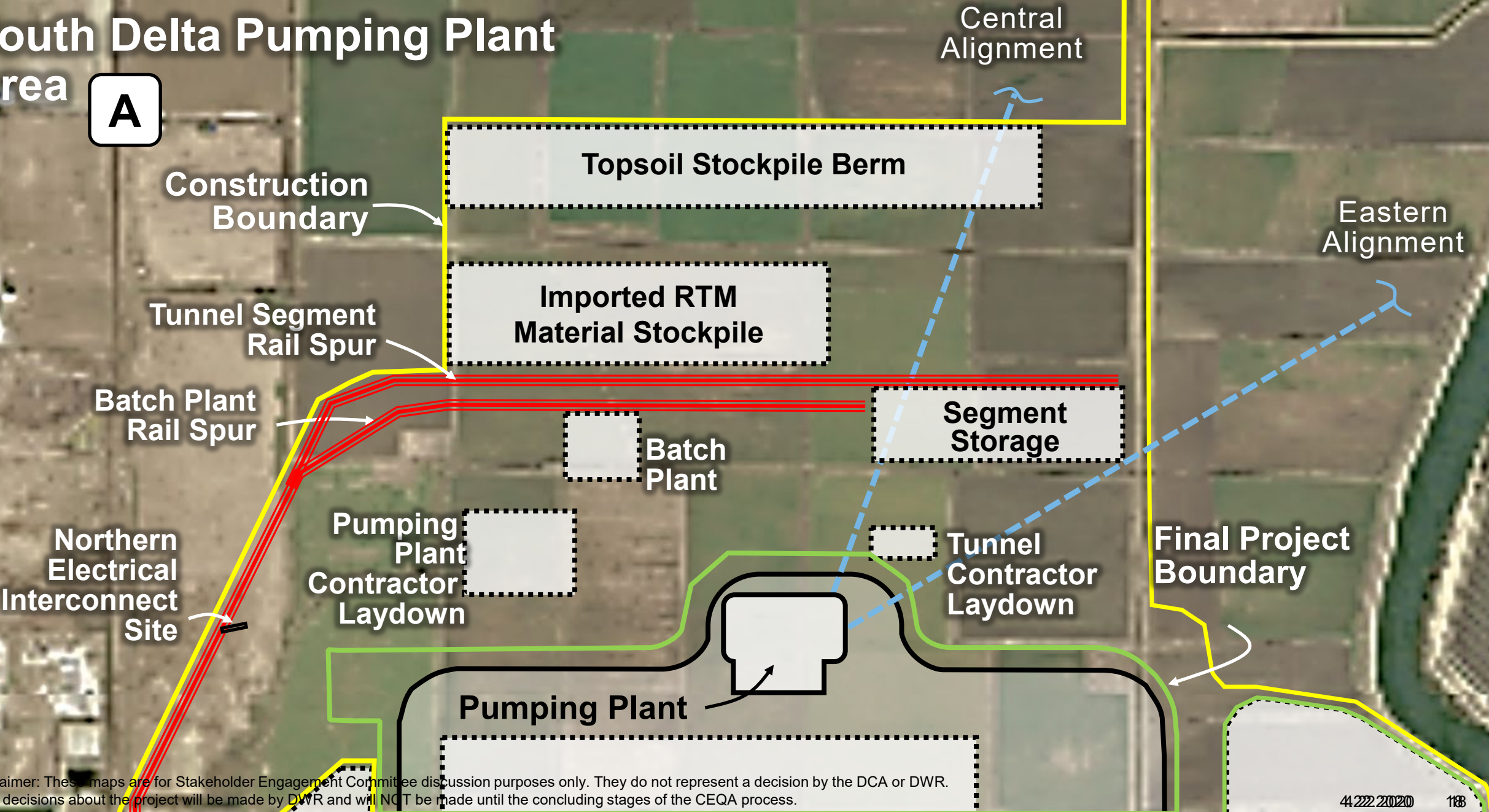
● Final Project Area:  
120 acres

Disclaimer: These maps are for Stakeholder Engagement Committee discussion purposes only. They do not represent a decision by the DCA or DWR. Final decisions about the project will be made by DWR and will NOT be made until the concluding stages of the CEQA process.



# South Delta Pumping Plant Area

A



Disclaimer: These maps are for Stakeholder Engagement Committee discussion purposes only. They do not represent a decision by the DCA or DWR. Final decisions about the project will be made by DWR and will NOT be made until the concluding stages of the CEQA process.



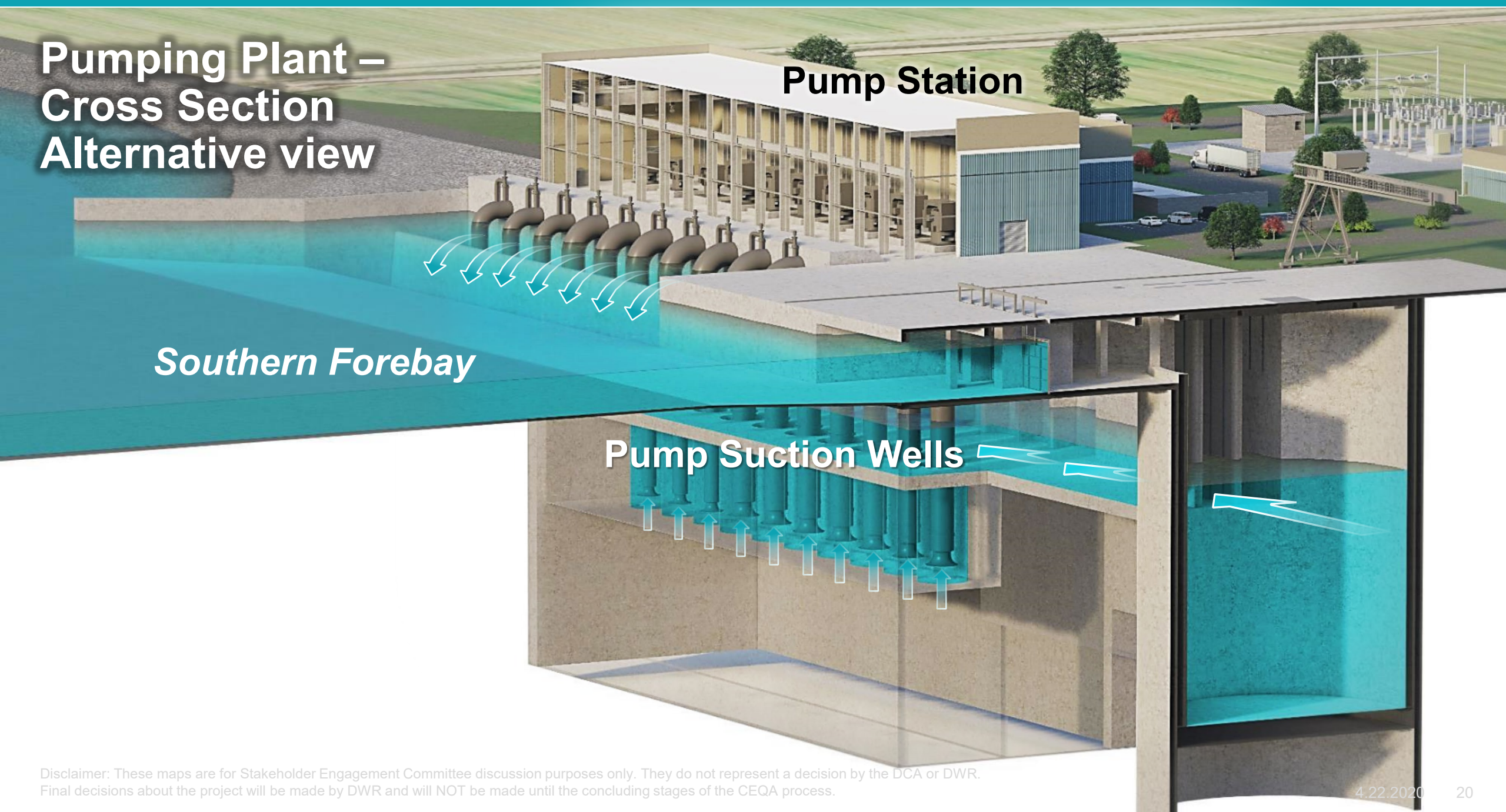
# Pumping Plant Site Plan (~50 acres)

**A**





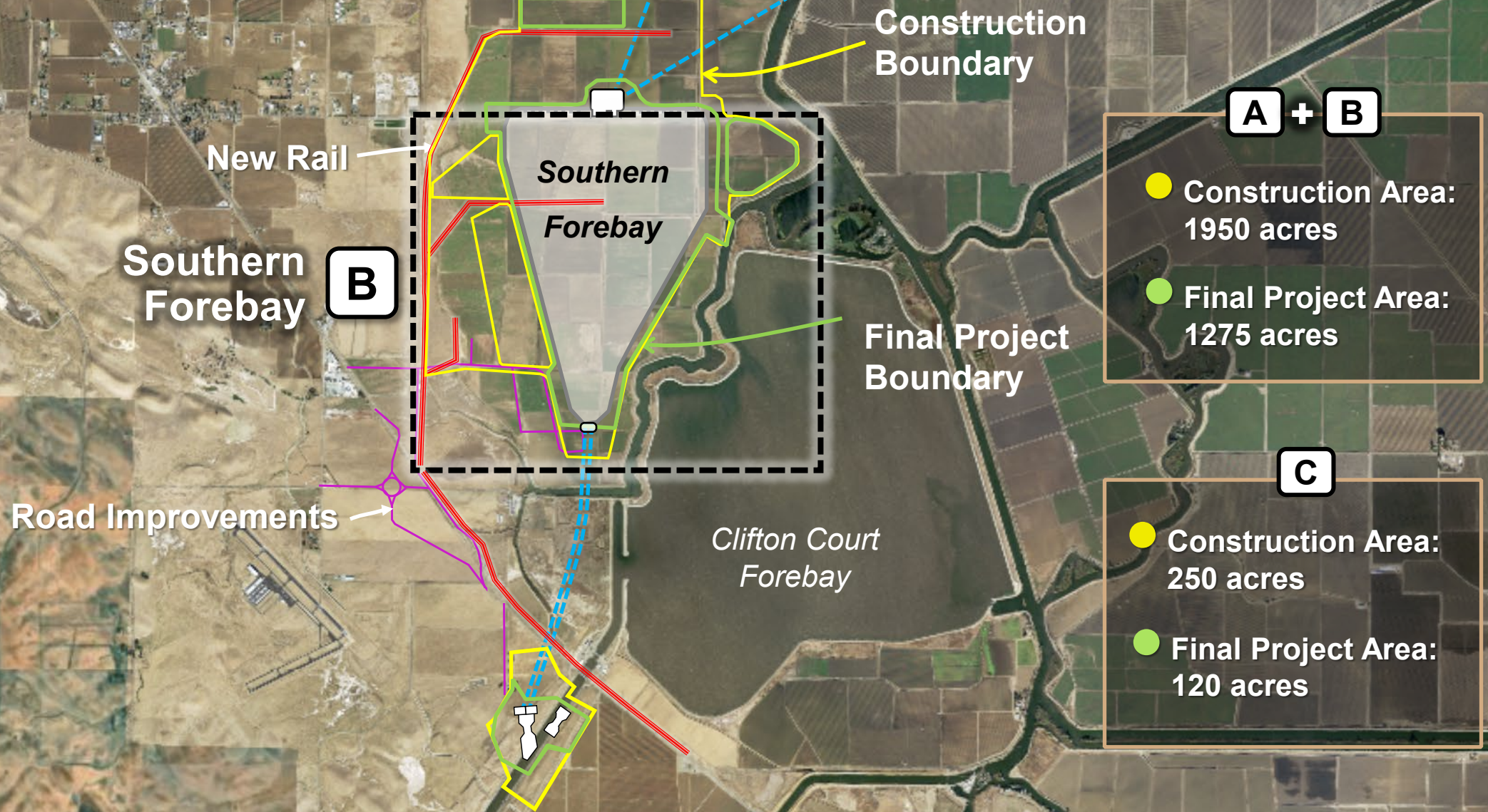
# Pumping Plant – Cross Section Alternative view



Disclaimer: These maps are for Stakeholder Engagement Committee discussion purposes only. They do not represent a decision by the DCA or DWR. Final decisions about the project will be made by DWR and will NOT be made until the concluding stages of the CEQA process.



# South Delta Facilities



Disclaimer: These maps are for Stakeholder Engagement Committee discussion purposes only. They do not represent a decision by the DCA or DWR. Final decisions about the project will be made by DWR and will NOT be made until the concluding stages of the CEQA process.



# Southern Forebay Area

**B**

Contractor Area  
First Responder Site

Heliport

Segment Storage

Rail Spur

Rail Spur

Road Improvements

RTM Treatment

RTM Storage

RTM Treatment

Peat Storage

Italian Slough

Spillway

Final Project Boundary

Construction Boundary

South Delta Outlet

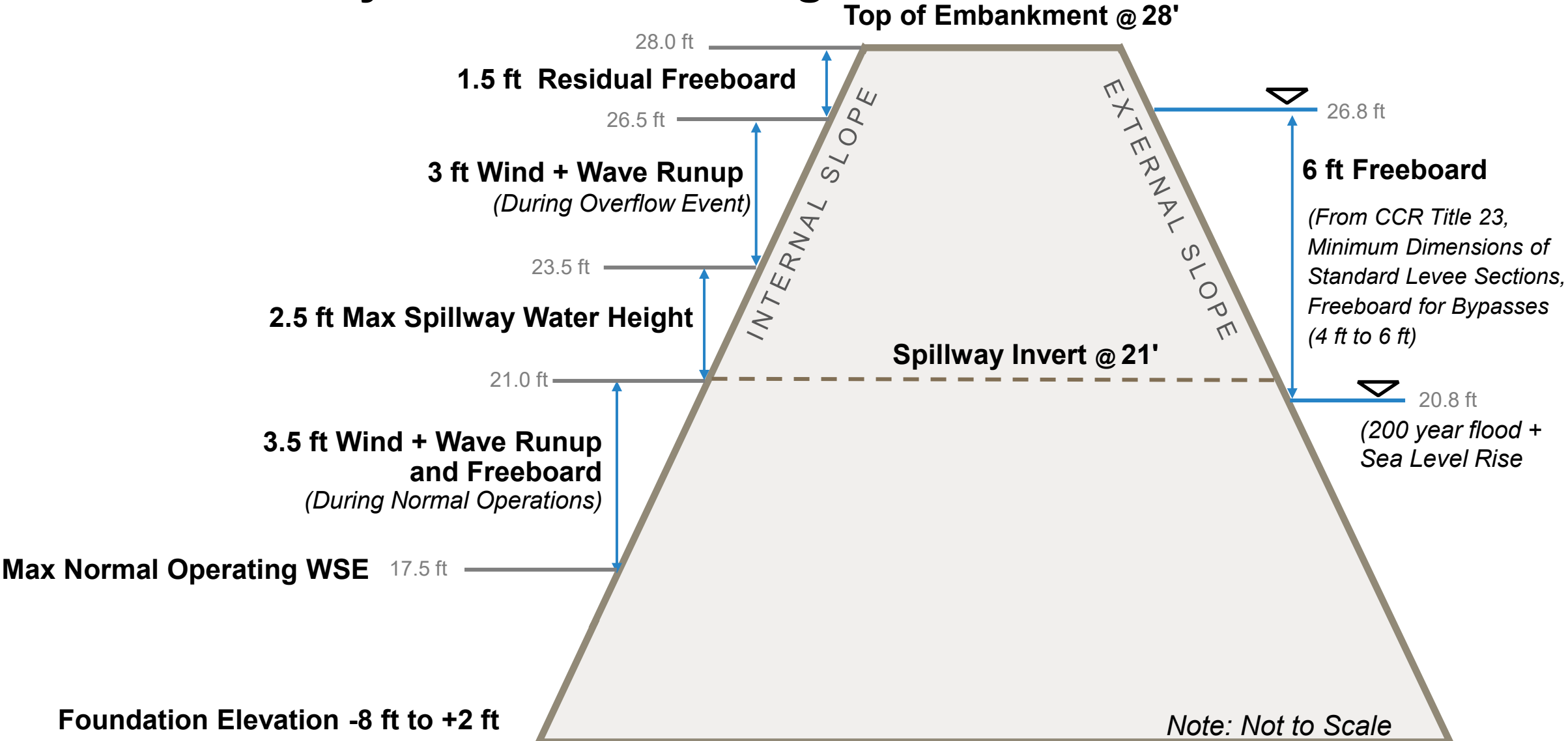
Tunnels

Clifton Court Forebay

Disclaimer: These maps are for Stakeholder Engagement Committee discussion purposes only. They do not represent a decision by the DCA or DWR. Final decisions about the project will be made by DWR and will NOT be made until the concluding stages of the CEQA process.

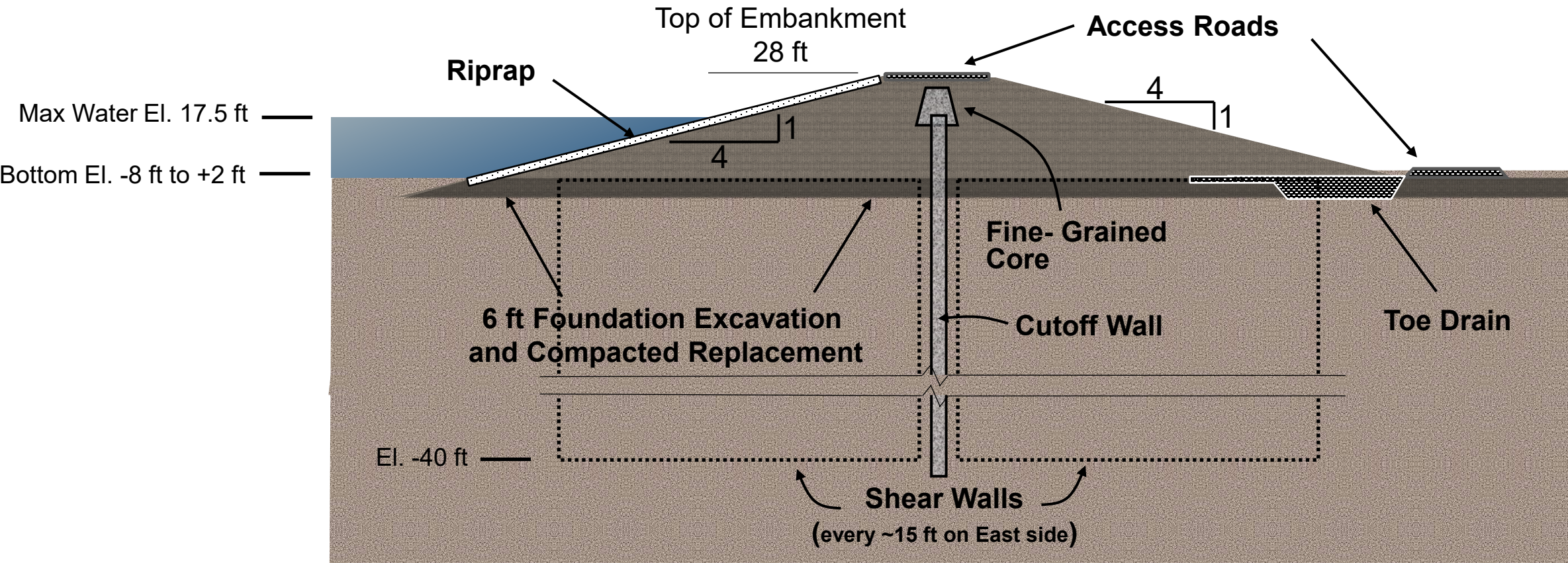


# Southern Forebay Embankment Height



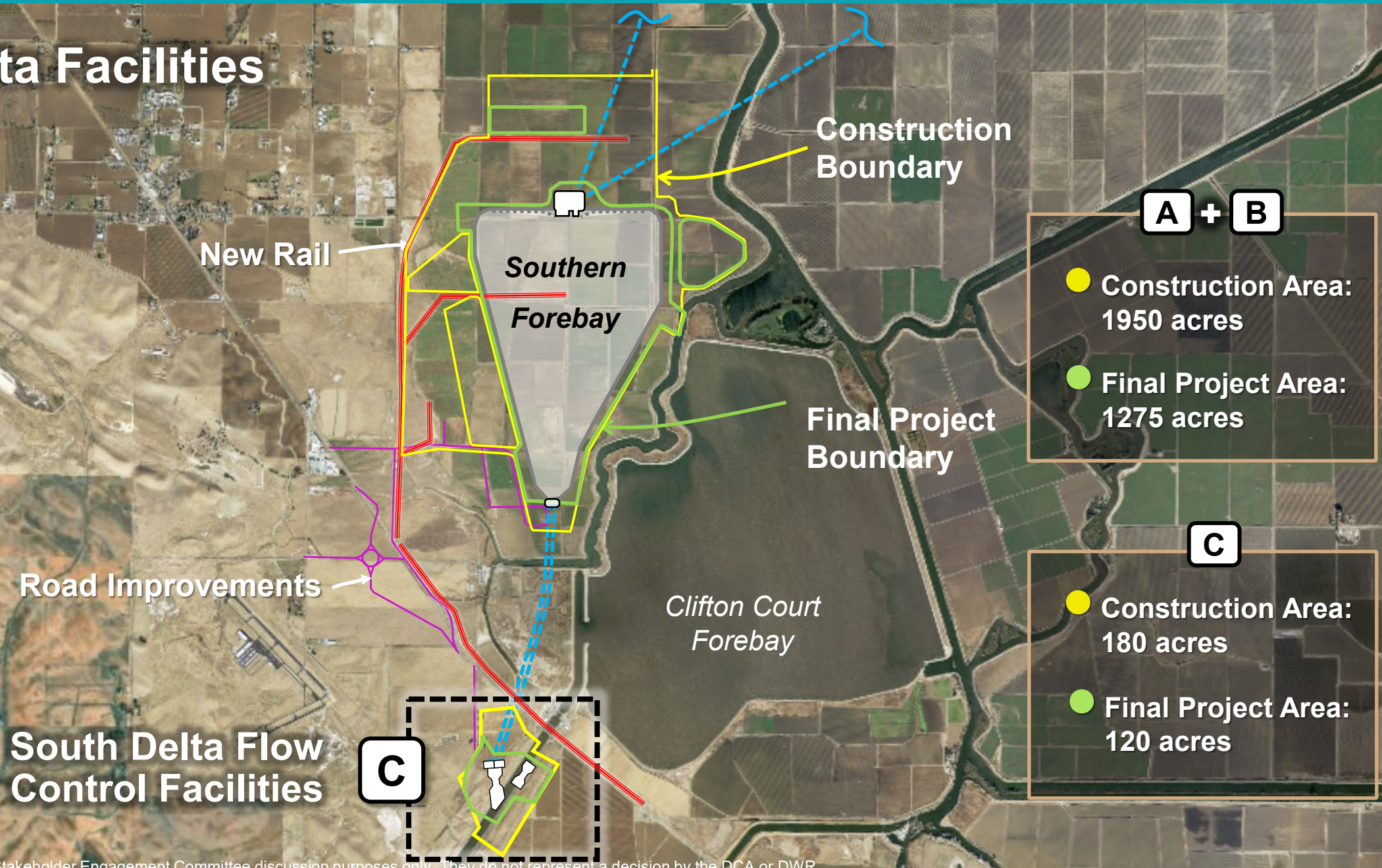


# Typical Embankment Cross Section





# South Delta Facilities

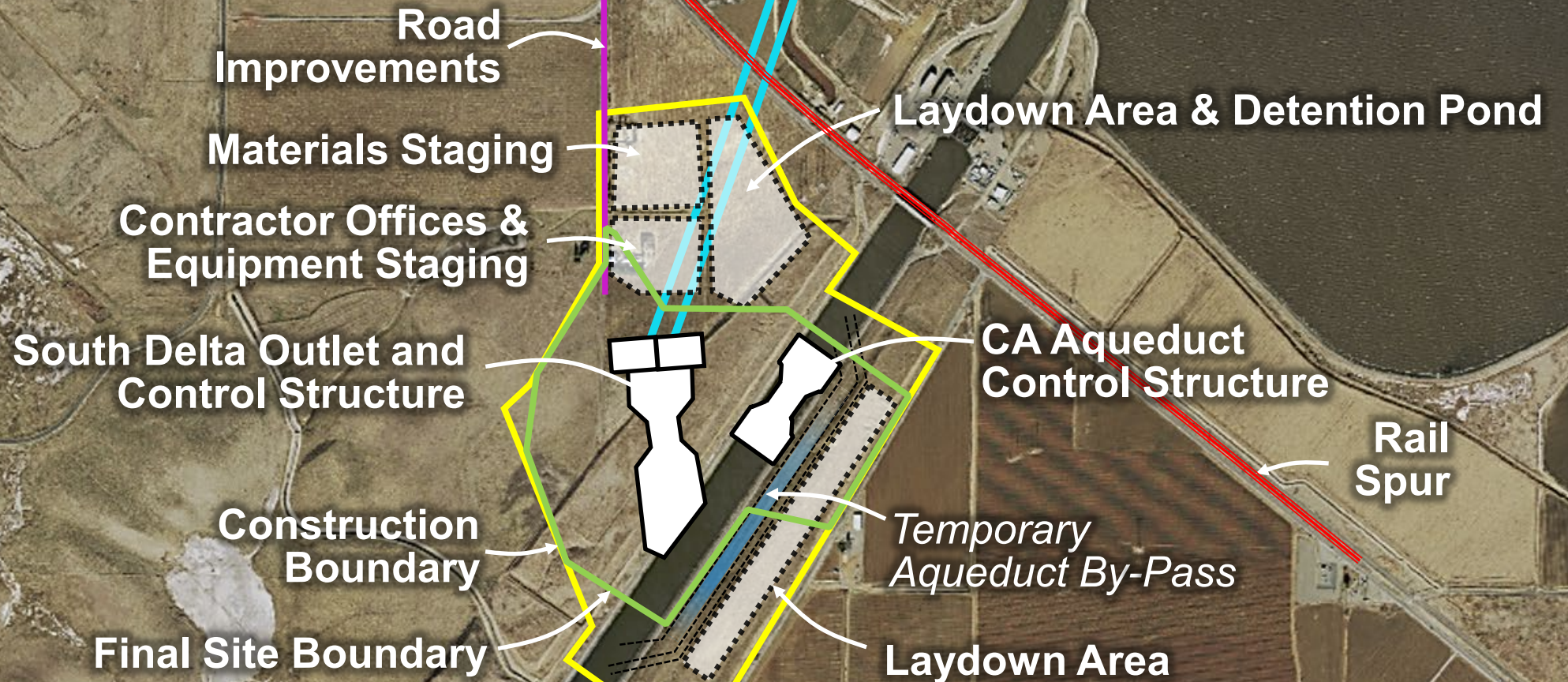


Disclaimer: These maps are for Stakeholder Engagement Committee discussion purposes only. They do not represent a decision by the DCA or DWR. Final decisions about the project will be made by DWR and will NOT be made until the concluding stages of the CEQA process.



# Southern Delta Conveyance Facilities Area

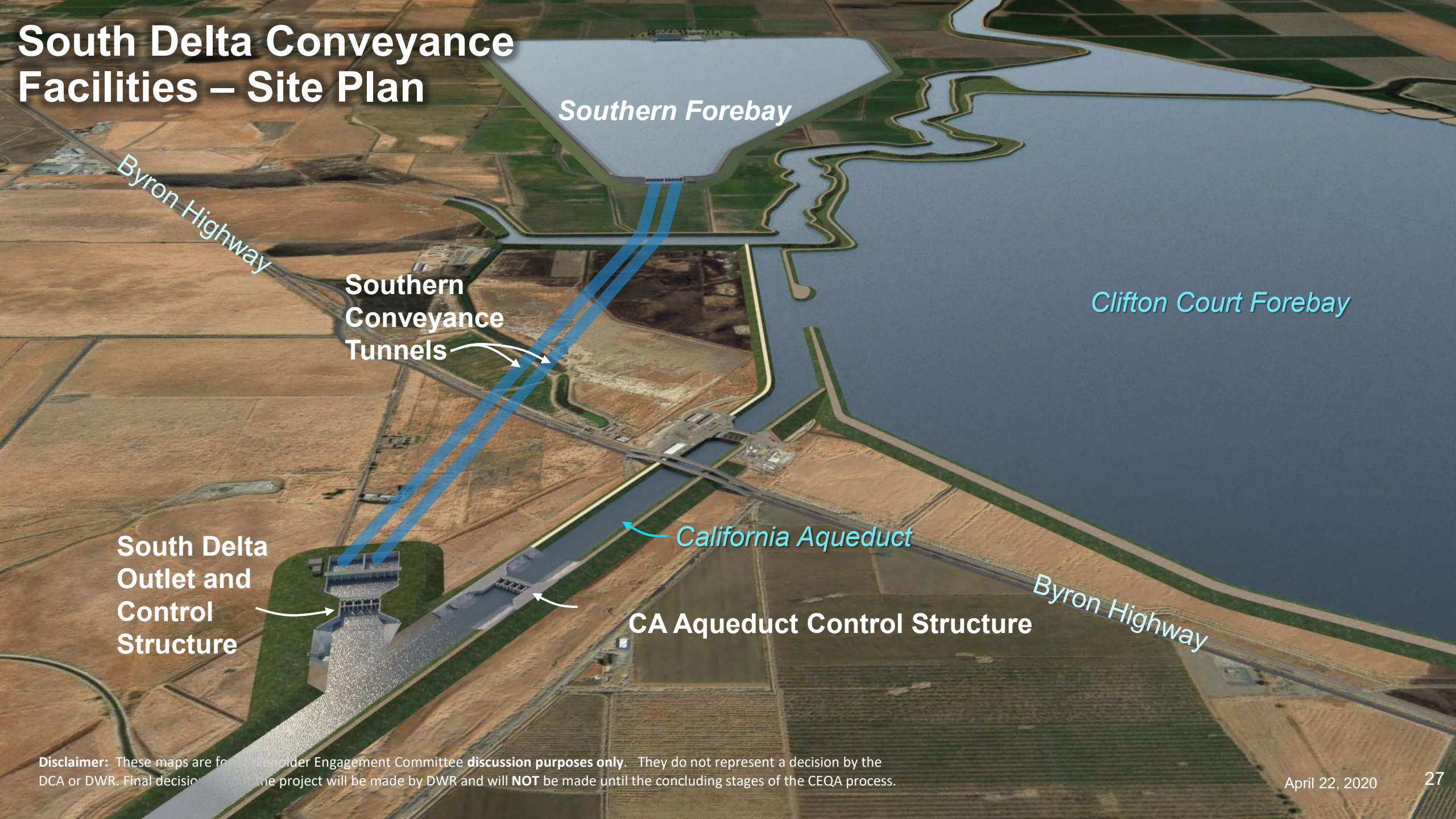
**C**



Disclaimer: These maps are for Stakeholder Engagement Committee discussion purposes only. They do not represent a decision by the DCA or DWR. Final decisions about the project will be made by DWR and will NOT be made until the concluding stages of the CEQA process.



# South Delta Conveyance Facilities – Site Plan

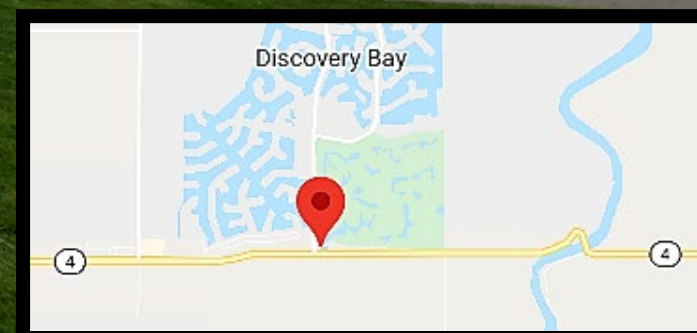


**Disclaimer:** These maps are for public comment and stakeholder engagement purposes only. They do not represent a decision by the DCA or DWR. Final decision on the project will be made by DWR and will NOT be made until the concluding stages of the CEQA process.



# Southern Facilities – View from Discovery Bay

New Facilities

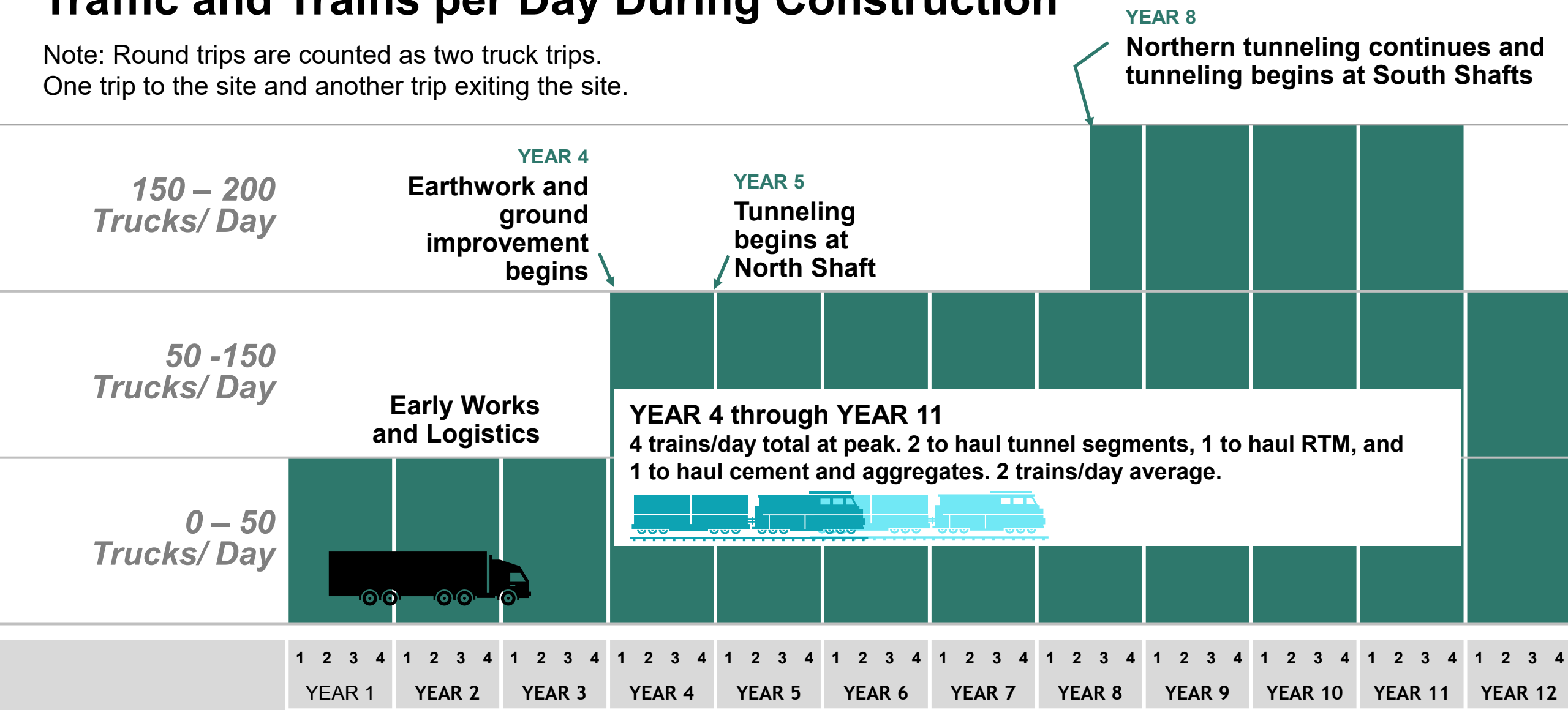


Disclaimer: These maps are for Stakeholder Engagement Committee discussion purposes only. They do not represent a decision by the DCA or DWR. Final decisions about the project will be made by DWR and will NOT be made until the concluding stages of the CEQA process.



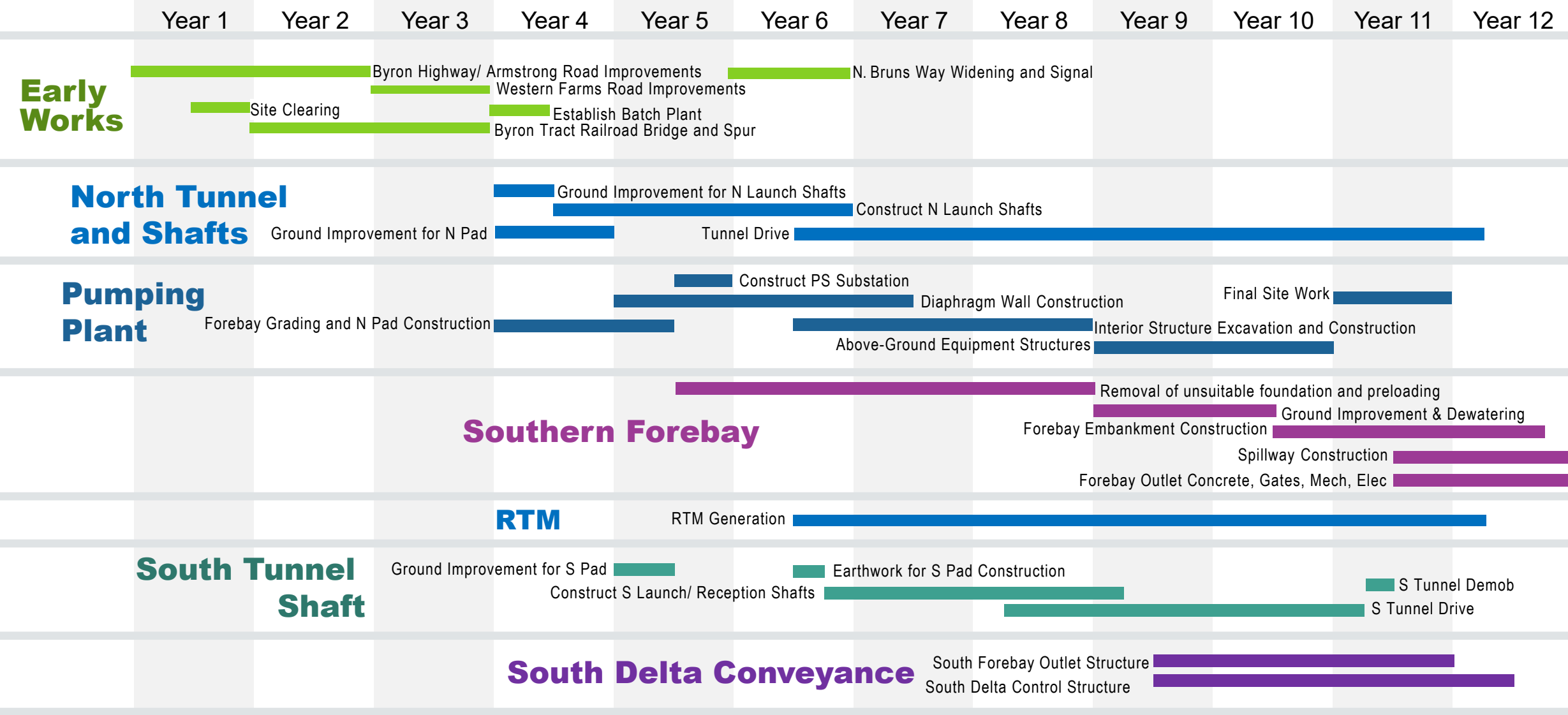
# Traffic and Trains per Day During Construction

Note: Round trips are counted as two truck trips.  
One trip to the site and another trip exiting the site.



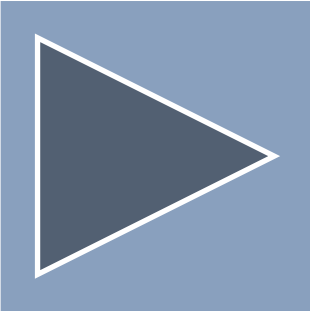
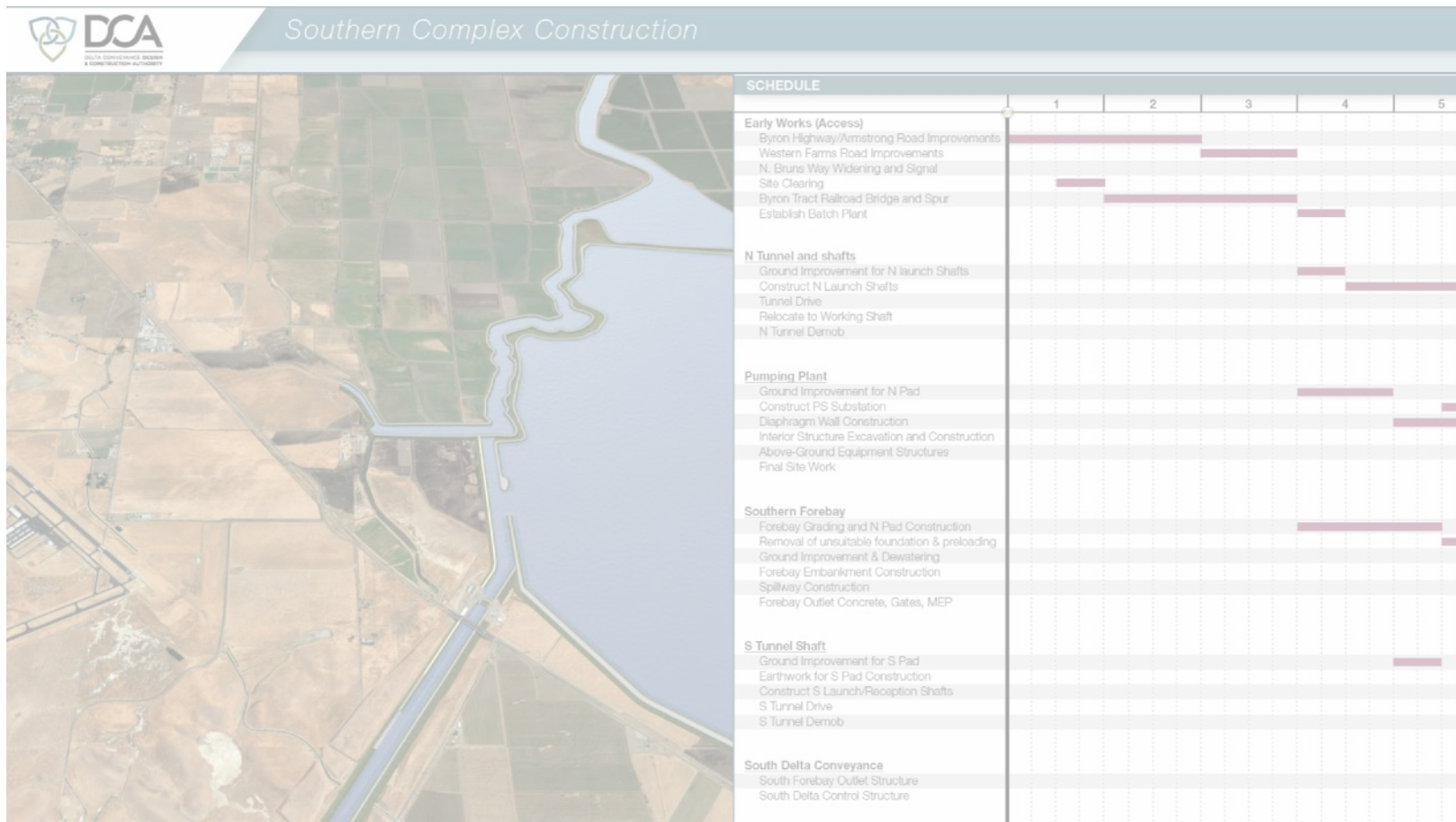


# Construction Schedule





# South Delta Facilities Construction Sequence



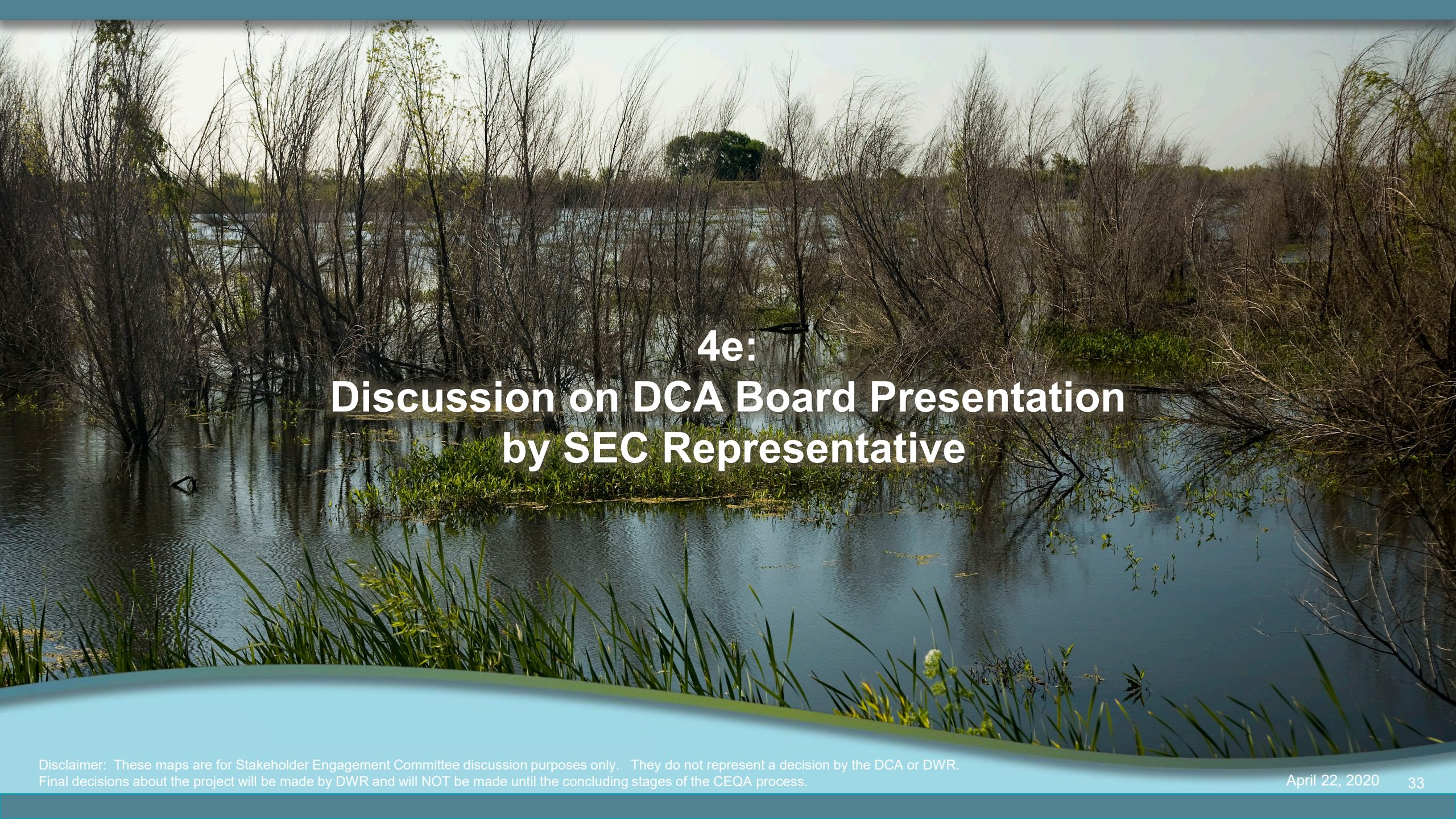
Disclaimer: These maps are for Stakeholder Engagement Committee discussion purposes only. They do not represent a decision by the DCA or DWR. Final decisions about the project will be made by DWR and will NOT be made until the concluding stages of the CEQA process.





## 4d: SEC Comments on Agendized Items





## 4e: Discussion on DCA Board Presentation by SEC Representative





## 4f: Public Comment on Agendized Items



# Next SEC Meeting

**Date:** May 27, 2020

**Time:** 3PM to 6PM

**Location:** On-Line (Anticipated)

**Agenda:** Site Plans Map Book  
Regional Traffic Model  
Regional Air Emissions  
Emergency Response Plans





# Upcoming SEC Meetings (4<sup>th</sup> Wednesday of the Month)

**May 27<sup>nd</sup>**

**June 24<sup>th</sup>**

**July 22<sup>nd</sup>**

**August 26<sup>th</sup>**



**Disclaimer:** These maps are for Stakeholder Engagement Committee **discussion purposes only**. They do not represent a decision by the DCA or DWR. Final decisions about the project will be made by DWR and will **NOT** be made until the concluding stages of the CEQA process.